

Controlled Lagrangians and the Stabilization of Mechanical Systems I: The First Matching Theorem

Anthony M. Bloch
Department of Mathematics
University of Michigan
Ann Arbor, MI 48109 (address for correspondence)
email: abloch@umich.edu fax: (734)763-0937

Naomi Ehrich Leonard
Department of Mechanical & Aerospace Engineering
Princeton University
Princeton, NJ 08544
email: naomi@princeton.edu fax: (609)258-6109

Jerrold E. Marsden
Control and Dynamical Systems 107-81
California Institute of Technology
Pasadena, CA 91125
email: marsden@cds.caltech.edu fax: (626)796-8914

November, 1995; this version: December, 2000
IEEE Trans. on Systems and Control, **45**, (2001), 2253–2270

Abstract

We develop a method for the stabilization of mechanical systems with symmetry based on the technique of *controlled Lagrangians*. The procedure involves making structured modifications to the Lagrangian for the uncontrolled system, thereby constructing the controlled Lagrangian. The Euler-Lagrange equations derived from the controlled Lagrangian describe the closed-loop system, where new terms in these equations are identified with control forces. Since the controlled system is Lagrangian by construction, energy methods can be used to find control gains that yield closed-loop stability.

In this paper we use *kinetic shaping* to preserve symmetry and only stabilize systems modulo the symmetry group. In the sequel to this paper (Part II), we extend the technique to include *potential* shaping and we achieve stabilization in the full phase space.

The procedure is demonstrated for several underactuated balance problems, including the stabilization of an inverted planar pendulum on a cart moving on a line and an inverted spherical pendulum on a cart moving in the plane.

Keywords: Stabilization, Nonlinear Systems, Lagrangian Mechanics;

Manuscript received September 10, 1998;

revised December 20, 1999 and January 13, 2000.

Contents

1	Introduction	2
1.1	The Controlled Lagrangian Approach	4
1.2	The Inverted Pendulum on a Cart	8
2	The First Matching Theorem.	12
2.1	The Structure of $L_{\tau,\sigma,\rho}$	12
2.2	The First Matching Theorem.	14
3	The Control Law and Stabilization	20
3.1	Determination of the Control Law	20
3.2	Stabilization of Relative Equilibria.	23
4	Inverted Pendula	25
4.1	Reprise of the Inverted Pendulum on a Cart	25
4.2	The Spherical Pendulum	27
5	Asymptotic Stabilization	31
5.1	Theory	32
5.2	Example	35

1 Introduction

In this paper we develop a constructive approach to the derivation of stabilizing control laws for Lagrangian mechanical systems where the Lagrangian has the form of kinetic minus potential energy. The method is Liapunov-based and thus yields large and computable basins of stability, which become asymptotically stable when dissipative controls are added. The methods are designed to be effective for the stabilization of balance systems, such as inverted pendula, as well as for systems with gyroscopic forces such as satellites and underwater vehicles with internal rotors. These examples are worked out in this and companion papers.

The guiding principle behind our methodology is to consider a class of control laws that yield closed-loop dynamics which remain in Lagrangian form. This has the advantage that stabilization can be understood in terms of energy. In particular, we can make use of energy methods which provide a Liapunov function which gives information on how to choose the control gains to achieve closed-loop stability. Further, even though work is done by the control forces, there is a modification of the mechanical energy of the system that is exactly conserved by the closed-loop dynamics; one can think of it as a combined energy available to the mechanism and the control forces. This can be used to show that, for fixed gains, the control inputs will never need to become large (in time) to achieve stabilization.

Closed-loop dynamics are guaranteed to be Lagrangian by first choosing the closed-loop Lagrangian from a class of *controlled Lagrangians* that we will explicitly describe. The controlled Lagrangian then provides the control law: the closed-loop dynamics are the Euler-Lagrange equations derived from the controlled Lagrangian

and the new terms that appear in the dynamic equations are identified with the control forces. The method ensures that the new terms in the equations of motion only appear in the desired control directions. The associated theory provides sufficient (*matching*) conditions under which this approach will provide such a control law that yields a closed-loop system in Lagrangian form.

The approach is motivated by a result in Bloch, Krishnaprasad, Marsden and Sánchez de Alvarez [1992] for stabilization of unstable middle axis rotation of a rigid spacecraft using a single internal rotor. There, the framework was Hamiltonian and it was shown that the chosen rotor control law was such that the closed-loop system was still Hamiltonian. The new Hamiltonian was a modification of the kinetic energy (Hamiltonian) of the uncontrolled spacecraft. The energy-Casimir method was used to choose the control gain and thereby guarantee closed-loop stability.

The objective of this paper is to demonstrate how the approach of Bloch, Krishnaprasad, Marsden and Sánchez de Alvarez [1992] can be generalized and made algorithmic. We switch to a Lagrangian framework from a Hamiltonian framework which helps us to systematize the modification of the uncontrolled Lagrangian to get our controlled Lagrangian. The basic idea behind our approach was introduced in Bloch, Marsden and Sánchez de Alvarez [1997] and in Bloch, Leonard and Marsden [1997], [1998]. We remark, however, that there is no reason that our procedure cannot be carried out on the Hamiltonian side. This leads to interesting questions regarding the modified symplectic structures involved and we shall look at this in a future publication. The matching conditions derived in this paper are explicit; for more general, but less explicit conditions, see Hamberg [1999] and Auckly, Kapitanski and White [2000].

In this paper, we confine ourselves to controlled Lagrangians that only involve modifications to the kinetic energy of the system. Thus, our approach is complementary to that of, for example, van der Schaft [1986] and Ortega, Loria, Kelly, and Praly [1995]. We can, however, also consider modifications to the potential energy for stabilization and tracking purposes and this is done in the sequel to this paper, Part II (Bloch, Chang, Leonard and Marsden [2000]).

The results of the present paper create an energy extremum in the *reduced* phase space and, accordingly, allow one to deal with *stability modulo the symmetries*, that is, stability on a reduced phase space. This is clearly a limitation, but this problem is addressed by the introduction of potential shaping, which allows one to achieve stabilization in the full phase space rather than simply modulo the symmetry directions. (For early results in this direction, see Bloch, Leonard and Marsden [1999b].) In addition, Part II extends the study of dissipative controllers to the case of potential shaping and, correspondingly, achieves asymptotic stability in the whole phase space, not just the reduced space.

In a forthcoming related paper, Bloch, Leonard and Marsden [2000], we consider the application of our methods to Euler-Poincaré systems which we illustrate with the problems of stabilization of rotation of a rigid spacecraft about its unstable intermediate axis using a single internal rotor and stabilization of the dynamics of an underwater vehicle.

In this paper we restrict ourselves to a class of systems satisfying *special* match-

ing conditions. This class includes balance systems, such as the inverted planar pendulum on a cart and the inverted spherical pendulum on a cart in the plane, which are mechanically flat, i.e., they lack gyroscopic forces. In a future paper we analyze a more general class of systems which includes examples with gyroscopic forces such as the inverted pendulum on a rotating arm also known as the whirling pendulum (see Bloch, Leonard and Marsden [1999a]).

Other relevant work involving energy methods in control and stabilization includes Krishnaprasad [1985], Wang and Krishnaprasad [1992], Koditschek [1989], Koditschek and Rimon [1990], Baillieul [1993] and Leonard [1997]. Related ideas on mechanical control systems may also be found in Brockett [1976], van der Schaft [1982], [1986], Crouch and van der Schaft [1987], Lewis and Murray [1997], and Jalnakurpar and Marsden [1999], [2000].

Organization of the Paper. In §1.1, we describe the controlled Lagrangian approach to stabilization. In §1.2, we apply the approach to stabilization of an inverted pendulum on a cart. In §2.1 we describe the structure of the general class of controlled Lagrangians we consider. In §2.2 we prove the first matching theorem showing that for certain kinds of systems with Abelian symmetry groups and with controls applied to these symmetry directions, one can always find a suitable controlled Lagrangian whose Euler-Lagrange equations give the desired controlled equations. The proof is constructive and shows explicitly how to choose the controlled Lagrangian and identifies the free gain parameters that are needed to achieve stabilization. The control law itself is derived in §3.1 and in §3.2 we give a sufficient condition for closed-loop stability. This is a stabilizability result in the context of the controlled Lagrangian approach and it provides a construction for choosing control gains for stability. In §4, we apply the approach to stabilization of inverted pendula, including the case of an inverted *spherical* pendulum on a cart. In §5 we show how to modify the control laws to simulate dissipative effects of the right sort to achieve *asymptotic stability*.

Part II (Bloch, Chang, Leonard and Marsden [2000]), extends the results herein to include *potential shaping and tracking*. It is shown that one gets asymptotic stability in the full phase space and it deals with such examples as the inverted planar pendulum (and spherical pendulum) on a cart that moves on an incline. Bloch, Marsden and Leonard [2000], proves a matching theorem designed specifically for the case of the Euler–Poincaré equations. This case, not covered by the first matching theorem, is applied to a spacecraft with an internal rotor and to the problem of stabilizing an underwater vehicle using internal rotors. In a further paper we prove a third matching theorem that includes the preceding as two special cases and apply it to a whirling pendulum (motivated by Åström and Furuta [1996]). This is discussed in Bloch, Leonard and Marsden [1999a].

1.1 The Controlled Lagrangian Approach

In this section we describe in broad terms the mathematics, intuition, and calculational procedure for the method of controlled Lagrangian. This provides a general

setting both for the current paper and related papers as described above.

The controlled Lagrangian approach begins with a mechanical system with an uncontrolled (free) Lagrangian equal to kinetic energy minus potential energy. We then modify the kinetic energy (given by a metric tensor) to produce a new controlled Lagrangian which describes the dynamics of the controlled closed-loop system. (As mentioned above the method can be extended to the case of modified potentials and this is described in the forthcoming Part II of this paper.)

The Setting. Suppose our system has configuration space Q and that a Lie group G acts freely and properly on Q . It is useful to keep in mind the case in which $Q = S \times G$ with G acting only on the second factor by acting on the left by group multiplication.

For example, for the inverted planar pendulum on a cart (which we consider in detail in §1.2), $Q = S^1 \times \mathbb{R}$ with $G = \mathbb{R}$, the group of reals under addition (corresponding to translations of the cart), while for a rigid spacecraft with a rotor (which we treat in a companion paper), $Q = \text{SO}(3) \times S^1$, where now the group is $G = S^1$, corresponding to rotations of the rotor.

Our goal will be to control the variables lying in the *shape space* Q/G (in the case in which $Q = S \times G$, then $Q/G = S$) using controls which act directly on the variables lying in G . We assume that the Lagrangian is invariant under the action of G on Q , where the action is on the factor G alone. In many specific examples, such as those given below, the invariance is equivalent to the Lagrangian being cyclic in the G -variables. Accordingly, this produces a conservation law for the free system. Our construction will preserve the invariance of the Lagrangian, thus providing us with a *controlled* conservation law.

The essence of the modification of the Lagrangian involves changing the metric tensor $g(\cdot, \cdot)$ that defines the kinetic energy of the system $\frac{1}{2}g(\dot{q}, \dot{q})$.

Our method relies on a special decomposition of the tangent spaces to the configuration manifold and a subsequent “controlled” modification of this split. We can describe this as follows:

Horizontal and Vertical Spaces. The tangent space to Q can be split into a sum of horizontal and vertical parts defined as follows: for each tangent vector v_q to Q at a point $q \in Q$, we can write a unique decomposition

$$v_q = \text{Hor } v_q + \text{Ver } v_q, \tag{1.1}$$

such that the vertical part is tangent to the orbits of the G -action and where the horizontal part is the metric orthogonal to the vertical space; that is, it is uniquely defined by requiring the identity

$$g(v_q, w_q) = g(\text{Hor } v_q, \text{Hor } w_q) + g(\text{Ver } v_q, \text{Ver } w_q) \tag{1.2}$$

where v_q and w_q are arbitrary tangent vectors to Q at the point $q \in Q$. This choice of horizontal space coincides with that given by the *mechanical connection* - see, for example, Marsden [1992]. One can think intuitively of this decomposition of

vectors as a decomposition into a piece in the symmetry, or group direction (the vertical piece) and one in the shape, or internal direction (the horizontal piece). For example, in a vibrating molecule, this would correspond to a decomposition into rotational and vibrational modes. However, it is important to realize that even when $Q = S \times G$, while the vertical space consists of vectors with a zero first component, the horizontal space *need not* consist of vectors with a zero second component. In examples, deviations from this are important and correspond to the interaction of the dynamics of the shape and group variables.

The Controlled Lagrangian. For the kinetic energy of our controlled Lagrangian, we use a modified version of the right hand side of equation (1.2). The potential energy remains unchanged. The modification consists of three ingredients:

1. a different choice of horizontal space denoted Hor_τ ,
2. a change $g \rightarrow g_\sigma$ of the metric acting on horizontal vectors and
3. a change $g \rightarrow g_\rho$ of the metric acting on vertical vectors.

To explain these changes in detail, we will need a little more notation. First of all, we let ξ_Q denote the infinitesimal generator corresponding to a Lie algebra element $\xi \in \mathfrak{g}$, where \mathfrak{g} is the Lie algebra of G (see Marsden [1992] or Marsden and Ratiu [1994], Chapter 9 for the relevant elementary definitions and properties of Lie groups and group actions). This may be thought of intuitively as infinitesimal group motions of the system. Thus, for each $\xi \in \mathfrak{g}$, ξ_Q is a vector field on the configuration manifold Q and its value at a point $q \in Q$ is denoted $\xi_Q(q)$.

Definition 1.1 *Let τ be a Lie-algebra-valued horizontal one form on Q ; that is, a one form with values in the Lie algebra \mathfrak{g} of G that annihilates vertical vectors. This means that for all vertical vectors v , the infinitesimal generator $[\tau(v)]_Q$ corresponding to $\tau(v) \in \mathfrak{g}$ is the zero vector field on Q . The τ -horizontal space at $q \in Q$ consists of tangent vectors to Q at q of the form $\text{Hor}_\tau v_q = \text{Hor } v_q - [\tau(v)]_Q(q)$, which also defines $v_q \mapsto \text{Hor}_\tau(v_q)$, the τ -horizontal projection. The τ -vertical projection operator is defined by $\text{Ver}_\tau(v_q) := \text{Ver}(v_q) + [\tau(v)]_Q(q)$.*

Notice that from these definitions and (1.1), we have

$$v_q = \text{Hor}_\tau(v_q) + \text{Ver}_\tau(v_q) \tag{1.3}$$

just as we did with τ absent. In fact, this new horizontal subspace can be regarded as defining a new connection, the τ -connection. The horizontal space itself, which by abuse of notation, we also write as just Hor or Hor_τ of course depends on τ also, but the vertical space does not—it is the tangent to the group orbit. On the other hand, the projection map $v_q \mapsto \text{Ver}_\tau(v_q)$ does depend on τ .

Definition 1.2 *Given g_σ, g_ρ and τ , we define the **controlled Lagrangian** to be the following Lagrangian which has the form of a modified kinetic energy minus the*

potential energy:

$$L_{\tau,\sigma,\rho}(v) = \frac{1}{2} [g_\sigma(\text{Hor}_\tau v_q, \text{Hor}_\tau v_q) + g_\rho(\text{Ver}_\tau v_q, \text{Ver}_\tau v_q)] - V(q), \quad (1.4)$$

where V is the potential energy.

The equations corresponding to this Lagrangian will be our closed-loop equations. The new terms appearing in those equations corresponding to the directly controlled variables are interpreted as control inputs. The modifications to the Lagrangian are chosen so that no new terms appear in the equations corresponding to the variables that are not directly controlled. We refer to this process as “matching”. This matching problem will be studied in detail in subsequent sections.

Another way of expressing what we are doing here is the following. A principal connection on a bundle $Q \rightarrow Q/G$, may be thought of as a Lie-algebra-valued one form and one can obtain a new connection by adding to it a horizontal one form τ . The new horizontal space described in the preceding definition is exactly of this sort.

Special Controlled Lagrangians. In this paper we consider controlled Lagrangians in which we take $g_\rho = g$ so that the formula (1.4) describes a controlled Lagrangian of the form $L_{\tau,\sigma}$. In certain examples of interest, including the inverted planar or spherical pendulum on a cart, we not only can choose $g_\rho = g$ (i.e., there is no g_ρ modification needed), but we can also choose the metric g_σ to modify the original metric g only in the group directions by a scalar factor σ . As we shall see in section 2 the general formula for the controlled Lagrangian then takes the simplified form

$$L_{\tau,\sigma}(v) = L(v + [\tau(v)]_Q(q)) + \frac{\sigma}{2} g([\tau(v)]_Q, [\tau(v)]_Q). \quad (1.5)$$

We will develop a formula like this for the more general case of $L_{\tau,\sigma,\rho}$ (1.4) in §2.1. For the satellite with rotors, for example, and for stabilization in the full phase space one must include the effects of g_ρ as well; this modification, consistent with (1.4), is given by formula (2.2). Applications of the general case are discussed in the companion papers mentioned above. We remark in passing that the controlled Lagrangian is a modification of the Kaluza-Klein Lagrangian for a particle in a magnetic field, (see, for example, Marsden and Ratiu [1994]).

The General Strategy. In outline, the general procedure that one goes through to achieve stabilization is given in the following steps.

1. Start with a mechanical system with a Lagrangian L of the form kinetic minus potential energy and a symmetry group G . (In the pendulum-cart example below the symmetry group is translation in the horizontal direction).
2. Write down the equations of motion for the uncontrolled system.
3. Introduce τ, g_σ and g_ρ to get the controlled Lagrangian (1.4).

4. Write down the equations of motion corresponding to the controlled Lagrangian and read off the control law u from the equations in the symmetry variables (this will be a conservation law).
5. Choose τ , g_σ and g_ρ so that the controlled Euler-Lagrange equations for the original system (i.e., the Euler-Lagrange equations for the Lagrangian L with the control) agree with (that is, match) the Euler-Lagrange equations for the controlled Lagrangian $L_{\tau,\sigma,\rho}$. Determine a feedback law for u by using the Euler-Lagrange equations to eliminate accelerations; then the control law becomes a feedback that is configuration and, possibly, velocity dependent. The general matching theorem can be used to guide these calculations.
6. The stability of an equilibrium is determined by linearization or by the energy-momentum (or, when appropriate, the energy-Casimir-Arnold) method, using any available freedom in the choice of τ , g_σ and g_ρ .

We use this strategy to prove general matching and stabilizability theorems. The matching theorems provide sufficient conditions for successful completion of Steps 1 through 5 and an explicit construction of the controlled Lagrangian and the control law. In the case that matching is achieved, the stabilizability theorems provide sufficient conditions for closed-loop stability according to Step 6. Again the theory is constructive, providing an explicit choice of control gains for closed-loop stability.

We must emphasize that in doing concrete examples, it can be quite complicated to go through the preceding procedures directly, although we shall do so in the next section for the relatively simple case of the inverted pendulum on a cart. Using the general matching theorems in examples, however, is relatively straightforward.

1.2 The Inverted Pendulum on a Cart

Before developing the theory further, we will give an example to show how the ideas work in a concrete setting and to show that the ideas lead to interesting results.

The system we consider is the inverted pendulum on a cart. (The linearized case of this problem was considered in Bloch, Marsden and Sánchez de Alvarez [1997].) This example shows the effectiveness of the method for the stabilization of balance systems. Related examples we will treat later are the inverted spherical pendulum on a hockey puck, the satellite with rotors, the underwater vehicle with internal rotors and an inverted pendulum on a rotating arm.

Other examples that we hope will eventually be amenable to these methods include the bicycle (see, for example, Getz and Marsden [1994] and Koon and Marsden [1997]). For these *nonholonomic* systems, it is hoped that one can use the nonholonomic energy-momentum techniques of Zenkov, Bloch and Marsden [1998] to achieve stabilization.

The Lagrangian. First, we set up the Lagrangian for the pendulum-cart system. Let s denote the position of the cart on the s -axis and let ϕ denote the angle of the pendulum with the upright vertical, as in Figure 1.1.

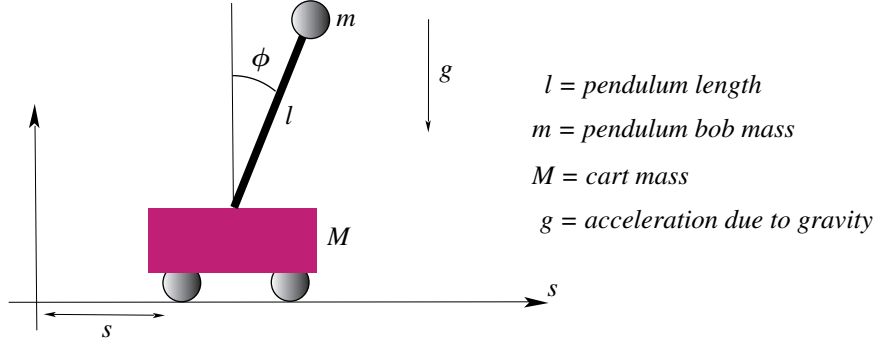


Figure 1.1: The pendulum on a cart.

The configuration space for this system is $Q = S \times G = S^1 \times \mathbb{R}$, with the first factor being the pendulum angle ϕ and the second factor being the cart position s . The velocity phase space, TQ has coordinates $(\phi, s, \dot{\phi}, \dot{s})$.

The velocity of the cart relative to the lab frame is \dot{s} , while the velocity of the pendulum relative to the lab frame is the vector

$$v_{\text{pend}} = (\dot{s} + l \cos \phi \dot{\phi}, -l \sin \phi \dot{\phi}). \quad (1.6)$$

The system kinetic energy is the sum of the kinetic energies of the cart and the pendulum:

$$K(\phi, s, \dot{\phi}, \dot{s}) = \frac{1}{2} [\dot{\phi}, \dot{s}] \begin{bmatrix} ml^2 & ml \cos \phi \\ ml \cos \phi & M + m \end{bmatrix} \begin{bmatrix} \dot{\phi} \\ \dot{s} \end{bmatrix}. \quad (1.7)$$

The Lagrangian is the kinetic minus potential energy, so we get

$$L(\phi, s, \dot{\phi}, \dot{s}) = K(\phi, s, \dot{\phi}, \dot{s}) - V(\phi), \quad (1.8)$$

where the potential energy is $V = mgl \cos \phi$.

The symmetry group G of the pendulum-cart system is that of translation in the s variable, so $G = \mathbb{R}$. We do not destroy this symmetry when doing stabilization in ϕ ; we would, however, use symmetry-breaking potentials to track in the variable s if tracking were our goal. In this paper we are focusing on *stabilizing this and similar balance systems*.

For notational convenience we rewrite the Lagrangian as

$$L(\phi, s, \dot{\phi}, \dot{s}) = \frac{1}{2}(\alpha \dot{\phi}^2 + 2\beta \cos \phi \dot{\phi} \dot{s} + \gamma \dot{s}^2) + D \cos \phi, \quad (1.9)$$

where $\alpha = ml^2, \beta = ml, \gamma = M + m$ and $D = -mgl$ are constants. Note that $\alpha\gamma - \beta^2 > 0$, reflecting the positive definiteness of the mass matrix (i.e., the metric). The momentum conjugate to ϕ is

$$p_\phi = \frac{\partial L}{\partial \dot{\phi}} = \alpha \dot{\phi} + \beta \cos \phi \dot{s}$$

and the momentum conjugate to s is

$$p_s = \frac{\partial L}{\partial \dot{s}} = \gamma \dot{s} + \beta \cos \phi \dot{\phi}.$$

The relative equilibrium defined by $\phi = 0$, $\dot{\phi} = 0$ and $\dot{s} = 0$ is unstable since $D < 0$.

Equations of Motion. The equations of motion for the pendulum-cart system with a control force u acting on the cart (and no direct forces acting on the pendulum) are, since s is a cyclic variable,

$$\begin{aligned} \frac{d}{dt} \frac{\partial L}{\partial \dot{\phi}} - \frac{\partial L}{\partial \phi} &= 0 \\ \frac{d}{dt} \frac{\partial L}{\partial \dot{s}} &= u, \end{aligned}$$

i.e.,

$$\frac{d}{dt} p_\phi + \beta \sin \phi \dot{s} \dot{\phi} + D \sin \phi = 0,$$

that is,

$$\frac{d}{dt} (\alpha \dot{\phi} + \beta \cos \phi \dot{s}) + \beta \sin \phi \dot{s} \dot{\phi} + D \sin \phi = 0 \quad (1.10)$$

and

$$\frac{d}{dt} p_s = \frac{d}{dt} (\gamma \dot{s} + \beta \cos \phi \dot{\phi}) = u.$$

The Controlled Lagrangian. Next, we form the controlled Lagrangian by modifying only the kinetic energy of the free pendulum-cart system according to the procedure given in the preceding section. This involves a nontrivial choice of τ and g_σ , but in this case, as we have remarked, it is sufficient to let $g_\rho = g$.

The most general s -invariant horizontal one form τ is given by $\tau = k(\phi)d\phi$ and we choose g_σ to modify g in the group direction by a constant scalar factor σ (in general, σ need not be a constant, but it is for the present class of examples). Using (1.5), we let

$$L_{\tau,\sigma} := \frac{1}{2}(\alpha \dot{\phi}^2 + 2\beta \cos \phi (\dot{s} + k\dot{\phi})\dot{\phi} + \gamma(\dot{s} + k\dot{\phi})^2) + \frac{\sigma}{2}\gamma k^2 \dot{\phi}^2 + D \cos \phi. \quad (1.11)$$

Notice that the variable s is still cyclic. Following the guidelines of the theory, we look for the feedback control by looking at the change in the conservation law. Associated to the new Lagrangian $L_{\tau,\sigma}$, we have the conservation law

$$\frac{d}{dt} \left(\frac{\partial L_{\tau,\sigma}}{\partial \dot{s}} \right) = \frac{d}{dt} (\beta \cos \phi \dot{\phi} + \gamma(\dot{s} + k\dot{\phi})) = 0, \quad (1.12)$$

which we can rewrite in terms of the conjugate momentum p_s for the uncontrolled Lagrangian as

$$\frac{d}{dt}p_s = u := -\frac{d}{dt}(\gamma k(\phi)\dot{\phi}). \quad (1.13)$$

Thus, we identify the term on the right hand side with the *control force* exerted on the cart.

Using the controlled Lagrangian and equation (1.12), the ϕ equation is computed to be

$$\begin{aligned} \left(\alpha - \frac{\beta^2}{\gamma} \cos^2 \phi + \sigma \gamma k^2(\phi)\right) \ddot{\phi} + \left(\frac{\beta^2}{\gamma} \cos \phi \sin \phi + \sigma \gamma k(\phi)k'(\phi)\right) \dot{\phi}^2 \\ + D \sin \phi = 0. \end{aligned} \quad (1.14)$$

Matching. The next step is to make choices of k and σ so that the equation (1.14) using the controlled Lagrangian agrees with the ϕ equation for the controlled cart (1.10) with the control law given by equation (1.13). The ϕ equation for the controlled cart is

$$\begin{aligned} \left(\alpha - \frac{\beta^2}{\gamma} \cos^2 \phi - \beta k(\phi) \cos \phi\right) \ddot{\phi} + \left(\frac{\beta^2}{\gamma} \cos \phi \sin \phi - \beta \cos \phi k'(\phi)\right) \dot{\phi}^2 \\ + D \sin \phi = 0. \end{aligned} \quad (1.15)$$

Comparing equations (1.14) and (1.15) we see that we require (twice)

$$\sigma \gamma [k(\phi)]^2 = -\beta k(\phi) \cos \phi. \quad (1.16)$$

Since σ was assumed to be a constant we set

$$k(\phi) = \kappa \frac{\beta}{\gamma} \cos \phi \quad (1.17)$$

where κ is a dimensionless constant (so $\sigma = -1/\kappa$).

The Control Law. Substituting for $\ddot{\phi}$ and k in (1.13) we obtain the desired nonlinear control law:

$$u = \frac{\kappa \beta \sin \phi \left(\alpha \dot{\phi}^2 + \cos \phi D\right)}{\alpha - \frac{\beta^2}{\gamma} (1 + \kappa) \cos^2 \phi} \quad (1.18)$$

Stabilization. By examining either the energy or the linearization of the closed-loop system, one can see that the equilibrium $\phi = \dot{\phi} = \dot{s} = 0$ is stable if

$$\kappa > \frac{\alpha \gamma - \beta^2}{\beta^2} = \frac{M}{m} > 0. \quad (1.19)$$

In summary, *we get a stabilizing feedback control law for the inverted pendulum provided κ satisfies the inequality (1.19)*. As mentioned in the introduction, this means stability in the reduced space, that is, modulo translations. Concretely, this means that one has stability in the pendulum position, but not in the cart position, even though, as we shall see, with dissipation, one can bring the cart velocity to zero. Our work on potential shaping (Part II; see also Bloch, Leonard and Marsden [1999b]) demonstrates how to obtain stability in the cart position also.

A calculation shows that the denominator of u is nonzero for ϕ satisfying $\sin^2 \phi < E/F$ where $E = \kappa - (\alpha\gamma - \beta^2)/\beta^2$ (E is positive if the stability condition holds) and $F = \kappa + 1$. The range of ϕ tends to the range $-\pi/2 < \phi < \pi/2$ for large κ .

The above remark suggests that the region of stability (or attraction when damping control is added) is the whole range of non-downward pointing states. In fact, we assert that this method produces large computable domains of attraction for stabilization.

This approach has advantages because *it is done within the context of mechanics*; one can understand the stabilization in terms of the effective creation of an *inverted energy well* by the feedback control. (Our feedback in general creates a maximum for balance systems, since for these systems the equilibrium is a maximum of the potential energy which we do not modify). As discussed in §5, the system is then robustly stabilized by the addition of appropriate dissipation. Note also that the linearized feedback is just proportional feedback.

Remark. The matching procedure does not involve the actual *value* of the new conserved quantity for the controlled system—this is also true for all three of the matching theorems in this paper. The value of the conserved quantity was used in Bloch, Krishnaprasad, Marsden and Sanchez [1992] because a *symmetry reduction* was performed.

2 The First Matching Theorem.

In this section, we prove the first of three major matching theorems: the case of $g_\rho = g$.

The main goal is to abstract what was happening for the case of the inverted planar pendulum and prove a general matching theorem that applies to such examples. We apply the matching result to the more sophisticated case of the inverted *spherical* pendulum in

§4.2. As shown in companion papers, more general results (e.g., where $g_\rho \neq g$) are needed for the case of the satellite and the underwater vehicle as well as the whirling pendulum.

2.1 The Structure of $L_{\tau,\sigma,\rho}$

As we have mentioned, while we needed only $L_{\tau,\sigma}$ for the inverted pendulum, we will eventually need $L_{\tau,\sigma,\rho}$ for the satellite with a rotor, the underwater vehicle and the inverted pendulum on a rotor arm.

In this section we prove a structure theorem for $L_{\tau,\sigma,\rho}$ that proves and generalizes formula (1.5). Recall that this formula was already helpful in the case of the inverted pendulum; likewise, the formula below will be useful in our first matching theorem and in the case of the satellite and the underwater vehicle, etc.

We begin by recalling the definition of the controlled Lagrangian:

$$L_{\tau,\sigma,\rho}(v) = \frac{1}{2} [g_\sigma(\text{Hor}_\tau v_q, \text{Hor}_\tau v_q) + g_\rho(\text{Ver}_\tau v_q, \text{Ver}_\tau v_q)] - V(q), \quad (2.1)$$

and we make the following assumptions on the metric g_σ (these assumptions are also appropriate for the case of $L_{\tau,\sigma}$ that we considered earlier):

1. $g = g_\sigma$ on Hor ,
2. Hor and Ver are orthogonal for g_σ .

Keep in mind that Hor denotes the horizontal space for the given uncontrolled system and that Hor_τ denotes the horizontal space as modified by the one form τ . Note also that the new metrics g_σ and g_ρ will modify g on Ver , the vertical space (or group directions), which is independent of any modification due to τ . On the other hand, also recall that the *vertical projection operator*

$$\text{Ver}_\tau(v_q) := \text{Ver}(v_q) + [\tau(v)]_Q(q)$$

does depend on τ .

Theorem 2.1 *We have the following formula:*

$$L_{\tau,\sigma,\rho}(v) = L(v + \tau(v)_Q) + \frac{1}{2} g_\sigma(\tau(v)_Q, \tau(v)_Q) + \frac{1}{2} \varpi(v) \quad (2.2)$$

where $v \in T_q Q$ and where $\varpi(v) = (g_\rho - g)(\text{Ver}_\tau(v), \text{Ver}_\tau(v))$.

Note that if $g_\rho = g$ (so that $\varpi = 0$) and if g_σ is a scalar times g in the group directions, then this formula reduces to (1.5).

Proof. We begin by manipulating the first (“kinetic energy”) term of $L_{\tau,\sigma,\rho}$, (2.1), using the given properties of g_σ and the definition of the τ -horizontal operator $\text{Hor}_\tau(v_q) = \text{Hor}(v_q) - \tau(v)_Q$:

$$\begin{aligned} \frac{1}{2} [g_\sigma(\text{Hor}_\tau v_q, \text{Hor}_\tau v_q)] &= \frac{1}{2} [g_\sigma(\text{Hor}(v) - \tau(v)_Q, \text{Hor}(v) - \tau(v)_Q)] \\ &= \frac{1}{2} [g(\text{Hor}(v), \text{Hor}(v)) + g_\sigma(\tau(v)_Q, \tau(v)_Q)]. \end{aligned}$$

Write the second term of (2.1) as

$$\frac{1}{2} [g_\rho(\text{Ver}_\tau v_q, \text{Ver}_\tau v_q)] = \frac{1}{2} [g(\text{Ver}_\tau v_q, \text{Ver}_\tau v_q) + \varpi(v)]$$

Now write

$$\begin{aligned}
\frac{1}{2} [g(\text{Ver}_\tau v_q, \text{Ver}_\tau v_q)] &= \frac{1}{2} [g(\text{Ver}(v) + \tau(v)_Q, \text{Ver}(v) + \tau(v)_Q)] \\
&= \frac{1}{2} g(\text{Ver}(v), \text{Ver}(v)) + g(\text{Ver}(v), \tau(v)_Q) + \frac{1}{2} g(\tau(v)_Q, \tau(v)_Q) \\
&= \frac{1}{2} g(\text{Ver}(v), \text{Ver}(v)) + g(v, \tau(v)_Q) + \frac{1}{2} g(\tau(v)_Q, \tau(v)_Q),
\end{aligned}$$

since $v = \text{Hor}(v) + \text{Ver}(v)$ and the horizontal space is g -orthogonal to the vertical space. Substituting this last expression into the second term of (2.1) and adding it to the first term gives

$$\frac{1}{2} g(v, v) + g(v, \tau(v)_Q) + \frac{1}{2} g(\tau(v)_Q, \tau(v)_Q) + \frac{1}{2} g_\sigma(\tau(v)_Q, \tau(v)_Q) + \frac{1}{2} \varpi(v)$$

which equals

$$\frac{1}{2} g(v + \tau(v)_Q, v + \tau(v)_Q) + \frac{1}{2} g_\sigma(\tau(v)_Q, \tau(v)_Q) + \frac{1}{2} \varpi(v).$$

Subtracting the potential gives the desired expression. \blacksquare

2.2 The First Matching Theorem.

Introduction. Motivated by the inverted planar pendulum on a cart, in this section we prove the first matching theorem for mechanical systems such as the inverted pendulum for which we can take $g_\rho = g$. The group G associated with the control directions will be assumed to be Abelian. We illustrate this case in §4 with inverted pendula, including the inverted spherical pendulum on a two-dimensional “cart”.

Roughly speaking, the class of systems covered by the first matching theorem are those whose control forces are in the direction of an Abelian symmetry group, (such as the translation direction for the pendulum on a cart), whose inertial properties are independent of the internal configuration of the system (such as the total translational inertia of the cart pendulum system is independent of the angle of the pendulum) and whose gyroscopic structure satisfies a certain symmetry condition. The exact hypotheses are spelled out in assumptions M-1, M-2 and M-3 discussed hereunder.

All of the matching theorems are constructive; they show *explicitly* how to pick the controlled Lagrangian to achieve the desired matching in a way that generalizes the example of the inverted planar pendulum on a cart.

The Controlled Lagrangian Identity. Let Hor be the horizontal space for the given kinetic energy metric as explained earlier, let τ be a horizontal one form and let Hor_τ be the new horizontal space as explained earlier. Define $L_{\tau, \sigma, \rho}$ according to Definition 1.2. Theorem 2.1 for our controlled Lagrangian says that

$$L_{\tau, \sigma, \rho}(v) = L(v + \tau(v)_Q) + \frac{1}{2} g_\sigma(\tau(v)_Q, \tau(v)_Q) + \frac{1}{2} \varpi(v)$$

where $\varpi = g_\rho - g$ on the vertical space. For this section, we choose $g_\rho = g$, so $\varpi = 0$ and we get

$$L_{\tau,\sigma}(v) = L(v + \tau(v)_Q) + \frac{1}{2}g_\sigma(\tau(v)_Q, \tau(v)_Q). \quad (2.3)$$

This formula will be extremely useful for the first matching theorem, which we shall perform using a coordinate calculation.

Notation. Locally, we write coordinates for Q as x^α, θ^a where $x^\alpha, \alpha = 1, \dots, n$ are coordinates on the shape space Q/G and where $\theta^a, a = 1, \dots, r$ are coordinates for the Abelian group G . For the uncontrolled system, the variables θ^a will be cyclic coordinates in the classical sense. We write the given Lagrangian in these coordinates (with the summation convention in force) as

$$L(x^\alpha, \dot{x}^\beta, \dot{\theta}^a) = \frac{1}{2}g_{\alpha\beta}\dot{x}^\alpha\dot{x}^\beta + g_{\alpha a}\dot{x}^\alpha\dot{\theta}^a + \frac{1}{2}g_{ab}\dot{\theta}^a\dot{\theta}^b - V(x^\alpha). \quad (2.4)$$

The Conserved Quantity. The conserved quantity, that is, the momentum conjugate to the cyclic variable θ^a for the preceding Lagrangian, is given by

$$J_a = \frac{\partial L}{\partial \dot{\theta}^a} = g_{\alpha a}\dot{x}^\alpha + g_{ab}\dot{\theta}^b. \quad (2.5)$$

The Controlled Euler-Lagrange Equations. The equations of motion for the control system where the controls u_a act in the θ^a directions are the controlled Euler-Lagrange equations:

$$\begin{aligned} \frac{d}{dt} \frac{\partial L}{\partial \dot{x}^\alpha} - \frac{\partial L}{\partial x^\alpha} &= 0 \\ \frac{d}{dt} \frac{\partial L}{\partial \dot{\theta}^a} &= u_a. \end{aligned} \quad (2.6)$$

Coordinate Formulas for the Horizontal and Vertical Projections. We now embark on the development of coordinate formulas for the controlled Lagrangian. To do this, we first develop coordinate formulas for the horizontal and vertical projections.

For a vector $v = (\dot{x}^\alpha, \dot{\theta}^a)$, and suppressing the base point (x^α, θ^a) in the notation, its horizontal and vertical projections are verified to be

$$\text{Hor}(v) = (\dot{x}^\alpha, -g^{ab}g_{\alpha b}\dot{x}^\alpha); \quad \text{Ver}(v) = (0, \dot{\theta}^a + g^{ab}g_{\alpha b}\dot{x}^\alpha), \quad (2.7)$$

where, as is standard practice, g^{ab} denotes the inverse of the matrix g_{ab} . Notice that $v = \text{Hor}(v) + \text{Ver}(v)$, as it should.

These formulas can also be obtained systematically using the formulas for the mechanical connection in terms of the locked inertia tensor, as in, for example, Marsden [1992]. (In the present context, the locked inertia tensor is the tensor $\mathbb{I}_{ab} = g_{ab}$.)

The τ -horizontal and Vertical Projections. We shall write the given horizontal one form τ in coordinates as $\tau^a = \tau_\alpha^a dx^\alpha$. Thus,

$$[\tau(v)]_Q = (0, \tau_\alpha^a \dot{x}^\alpha). \quad (2.8)$$

The corresponding τ -horizontal and vertical operators are checked to be

$$\text{Hor}_\tau(v) = (\dot{x}^\alpha, -g^{ab} g_{\alpha b} \dot{x}^\alpha - \tau_\alpha^a \dot{x}^\alpha); \quad \text{Ver}_\tau(v) = (0, \dot{\theta}^a + g^{ab} g_{\alpha b} \dot{x}^\alpha + \tau_\alpha^a \dot{x}^\alpha). \quad (2.9)$$

Coordinate Formula for $L_{\tau,\sigma}$. We shall first develop a useful coordinate formula for $L_{\tau,\sigma}$. We write down the coordinate form of the definition followed by the coordinate form of the identity given in Theorem 2.1.

First of all, we write down the coordinate formula for $L_{\tau,\sigma}$ using the definition, namely formula (2.1) with $g_\rho = g$, along with the preceding coordinate formulas for the horizontal and vertical projections to get:

$$\begin{aligned} L_{\tau,\sigma} &= \frac{1}{2} \sigma_{\alpha\beta} \dot{x}^\alpha \dot{x}^\beta + \sigma_{a\beta} \dot{x}^\beta (-g^{ab} g_{\alpha b} \dot{x}^\alpha - \tau_\alpha^a \dot{x}^\alpha) \\ &\quad + \frac{1}{2} \sigma_{ab} (g^{ac} g_{\alpha c} \dot{x}^\alpha + \tau_\alpha^a \dot{x}^\alpha) (g^{bd} g_{\beta d} \dot{x}^\beta + \tau_\beta^b \dot{x}^\beta) \\ &\quad + \frac{1}{2} g_{ab} (\dot{\theta}^a + g^{ac} g_{\alpha c} \dot{x}^\alpha + \tau_\alpha^a \dot{x}^\alpha) (\dot{\theta}^b + g^{bd} g_{\beta d} \dot{x}^\beta + \tau_\beta^b \dot{x}^\beta) - V. \end{aligned} \quad (2.10)$$

Remark on Notation. We use the notation σ_{ab} for the ab components of g_σ and, later on, shall likewise use notation ρ_{ab} for the ab components of g_ρ .

Returning to the preceding calculation, formula (2.3) gives

$$L_{\tau,\sigma} = L(x^\alpha, \dot{x}^\beta, \dot{\theta}^a + \tau_\alpha^a \dot{x}^\alpha) + \frac{1}{2} \sigma_{ab} \tau_\alpha^a \tau_\beta^b \dot{x}^\alpha \dot{x}^\beta. \quad (2.11)$$

The equivalence of these two formulas may also be checked by a direct calculation in this case.

The Controlled Conserved Quantity. From (2.10) or (2.11), and (2.4), we find that the associated *controlled conserved quantity* is given by

$$\begin{aligned} \tilde{J}_a &= \frac{\partial L_{\tau,\sigma}}{\partial \dot{\theta}^a} = \frac{\partial L}{\partial \dot{\theta}^a} (x^\alpha, \dot{x}^\alpha, \dot{\theta}^b + \tau_\alpha^b \dot{x}^\alpha) \\ &= g_{\alpha a} \dot{x}^\alpha + g_{ab} (\dot{\theta}^b + \tau_\alpha^b \dot{x}^\alpha). \end{aligned} \quad (2.12)$$

We can also write this as

$$\tilde{J}_a = J_a + g_{ab} \tau_\alpha^b \dot{x}^\alpha. \quad (2.13)$$

Matching Euler-Lagrange Expressions. The θ^a -Euler-Lagrange equations for the controlled Lagrangian, which are equivalent to the controlled conservation law, will be used in §3.2 to determine the control law, consistent with the fact that this is the direction in which we are assuming we have control actuation.

Thus, our first job is to make sure that the x^α -Euler-Lagrange equations for L and for $L_{\tau,\sigma}$ agree. To do this, we let

$$\mathcal{E}_x(L_{\tau,\sigma}) = \frac{d}{dt} \frac{\partial L_{\tau,\sigma}}{\partial \dot{x}^\alpha} - \frac{\partial L_{\tau,\sigma}}{\partial x^\alpha} \quad (2.14)$$

denote the x^α -component of the Euler-Lagrange expression for our controlled Lagrangian $L_{\tau,\sigma}$.

Assume that the Euler-Lagrange equations for L hold. We want to see under what matching conditions they also hold for $L_{\tau,\sigma}$. From (2.11), and subtracting the Euler-Lagrange expression for L (this expression is zero by assumption) from that for $L_{\tau,\sigma}$, we have,

$$\begin{aligned} \mathcal{E}_x(L_{\tau,\sigma}) &= \frac{d}{dt} \left[\frac{\partial L}{\partial \dot{x}^\alpha}(x^\delta, \dot{x}^\delta, \dot{\theta}^a + \tau_\beta^a \dot{x}^\beta) - \frac{\partial L}{\partial \dot{x}^\alpha}(x^\delta, \dot{x}^\delta, \dot{\theta}^a) \right] \\ &\quad - \left[\frac{\partial L}{\partial x^\alpha}(x^\delta, \dot{x}^\delta, \dot{\theta}^a + \tau_\beta^a \dot{x}^\beta) - \frac{\partial L}{\partial x^\alpha}(x^\delta, \dot{x}^\delta, \dot{\theta}^a) \right. \\ &\quad \left. + \frac{\partial L}{\partial \theta^b}(x^\delta, \dot{x}^\delta, \dot{\theta}^a + \tau_\beta^a \dot{x}^\beta) \tau_{\delta,\alpha}^b \dot{x}^\delta \right] \\ &\quad + \frac{d}{dt} \left[\frac{\partial L}{\partial \theta^b}(x^\delta, \dot{x}^\delta, \dot{\theta}^a + \tau_\beta^a \dot{x}^\beta) \tau_\alpha^b + \sigma_{ac} \tau_\beta^a \tau_\alpha^c \dot{x}^\beta \right] \\ &\quad - \frac{\partial}{\partial x^\alpha} \left[\frac{1}{2} \sigma_{ab} \tau_\delta^a \tau_\beta^b \dot{x}^\delta \dot{x}^\beta \right] \end{aligned} \quad (2.15)$$

in which the partial derivatives with respect to L denote *slot derivatives*, where summation over repeated indices is understood and where $\tau_{\delta,\alpha}^b = \partial \tau_\delta^b / \partial x^\alpha$. We are assuming that the variables θ^a are cyclic for the controlled Lagrangian. Correspondingly, we are assuming that τ_β^a depends only on x^α in this calculation and those that follow.

Using (2.4), we have

$$\frac{\partial L}{\partial \dot{x}^\alpha} = g_{\alpha\beta} \dot{x}^\beta + g_{\alpha a} \dot{\theta}^a \quad (2.16)$$

and

$$\frac{\partial L}{\partial x^\alpha} = \frac{1}{2} g_{\beta\delta,\alpha} \dot{x}^\beta \dot{x}^\delta + g_{\delta b,\alpha} \dot{x}^\delta \dot{\theta}^b + \frac{1}{2} g_{ab,\alpha} \dot{\theta}^a \dot{\theta}^b - V_{,\alpha} \quad (2.17)$$

where we again use commas to denote partial differentiation of the components of the metric tensor (mass matrix) and V ; again, these are functions only of x^α —and not of θ^a since the θ^a variables are assumed cyclic.

Using (2.16) in the first line and (2.17) in the second line of (2.15), the Euler-Lagrange expression $\mathcal{E}_x(L_{\tau,\sigma})$ simplifies as follows:

$$\begin{aligned} \mathcal{E}_x(L_{\tau,\sigma}) &= \frac{d}{dt} \left[g_{\alpha a} \tau_{\beta}^a \dot{x}^{\beta} \right] - \left[g_{\delta b, \alpha} \dot{x}^{\delta} \tau_{\beta}^b \dot{x}^{\beta} + \frac{1}{2} g_{ab, \alpha} (2\tau_{\beta}^a \dot{x}^{\beta} \dot{\theta}^b + \tau_{\beta}^a \dot{x}^{\beta} \tau_{\delta}^b \dot{x}^{\delta}) \right] \\ &\quad - \frac{\partial L}{\partial \dot{\theta}^b} (x^{\delta}, \dot{x}^{\delta}, \dot{\theta}^a + \tau_{\beta}^a \dot{x}^{\beta}) \tau_{\delta, \alpha}^b \dot{x}^{\delta} \\ &\quad + \frac{d}{dt} \left[\frac{\partial L}{\partial \dot{\theta}^b} (x^{\alpha}, \dot{x}^{\alpha}, \dot{\theta}^a + \tau_{\alpha}^a \dot{x}^{\alpha}) \tau_{\alpha}^b + \sigma_{ab} \tau_{\beta}^a \tau_{\alpha}^b \dot{x}^{\beta} \right] - \frac{\partial}{\partial x^{\alpha}} \left[\frac{1}{2} \sigma_{ab} \tau_{\delta}^a \tau_{\beta}^b \dot{x}^{\delta} \dot{x}^{\beta} \right]. \end{aligned} \quad (2.18)$$

Using the controlled conservation law (2.12) in the third and fourth lines, this becomes

$$\begin{aligned} \mathcal{E}_x(L_{\tau,\sigma}) &= \frac{d}{dt} \left[g_{\alpha a} \tau_{\beta}^a \dot{x}^{\beta} \right] - \left[g_{\delta b, \alpha} \dot{x}^{\delta} \tau_{\beta}^b \dot{x}^{\beta} + \frac{1}{2} g_{ab, \alpha} (2\tau_{\beta}^a \dot{x}^{\beta} \dot{\theta}^b + \tau_{\beta}^a \dot{x}^{\beta} \tau_{\delta}^b \dot{x}^{\delta}) \right] \\ &\quad - \tilde{J}_b \tau_{\delta, \alpha}^b \dot{x}^{\delta} + \frac{d}{dt} \left[\tilde{J}_b \tau_{\alpha}^b + \sigma_{ab} \tau_{\beta}^a \tau_{\alpha}^b \dot{x}^{\beta} \right] - \frac{\partial}{\partial x^{\alpha}} \left[\frac{1}{2} \sigma_{ab} \tau_{\delta}^a \tau_{\beta}^b \dot{x}^{\delta} \dot{x}^{\beta} \right]. \end{aligned} \quad (2.19)$$

Since θ is cyclic for the controlled Lagrangian, the controlled conserved quantity is actually conserved. Thus, the above expression becomes:

$$\begin{aligned} \mathcal{E}_x(L_{\tau,\sigma}) &= \frac{d}{dt} \left[g_{\alpha a} \tau_{\beta}^a \dot{x}^{\beta} \right] - \left[g_{\delta b, \alpha} \dot{x}^{\delta} \tau_{\beta}^b \dot{x}^{\beta} + \frac{1}{2} g_{ab, \alpha} (2\tau_{\beta}^a \dot{x}^{\beta} \dot{\theta}^b + \tau_{\beta}^a \dot{x}^{\beta} \tau_{\delta}^b \dot{x}^{\delta}) \right] \\ &\quad + \tilde{J}_b [\tau_{\alpha, \delta}^b - \tau_{\delta, \alpha}^b] \dot{x}^{\delta} + \frac{d}{dt} \left[\sigma_{ab} \tau_{\beta}^a \tau_{\alpha}^b \dot{x}^{\beta} \right] - \frac{\partial}{\partial x^{\alpha}} \left[\frac{1}{2} \sigma_{ab} \tau_{\delta}^a \tau_{\beta}^b \dot{x}^{\delta} \dot{x}^{\beta} \right]. \end{aligned} \quad (2.20)$$

Some Assumptions. Now we are ready to introduce some crucial assumptions that are designed to make the preceding Euler-Lagrange expression vanish. The first of these is:

Assumption M-1. $\tau_{\alpha}^b = -\sigma^{ab} g_{\alpha a}$.

This condition says, roughly speaking, that τ_{α}^b are chosen to be the components of the “mechanical connection” formed out of g and g_{σ} . Of course, the condition can be equivalently written as

$$\sigma_{ab} \tau_{\alpha}^b = -g_{\alpha a}. \quad (2.21)$$

With Assumption M-1, the above expression becomes

$$\begin{aligned}
\mathcal{E}_x(L_{\tau,\sigma}) &= - \left[g_{\delta b,\alpha} \dot{x}^\delta \tau_\beta^b \dot{x}^\beta + \frac{1}{2} g_{ab,\alpha} (2\tau_\beta^a \dot{x}^\beta \dot{\theta}^b + \tau_\beta^a \dot{x}^\beta \tau_\delta^b \dot{x}^\delta) \right] \\
&\quad + \tilde{J}_b [\tau_{\alpha,\delta}^b - \tau_{\delta,\alpha}^b] \dot{x}^\delta - \frac{\partial}{\partial x^\alpha} \left[\frac{1}{2} \sigma_{ab} \tau_\delta^a \tau_\beta^b \dot{x}^\delta \dot{x}^\beta \right] \\
&= \left[g_{\delta b,\alpha} \dot{x}^\delta \sigma^{bc} g_{\beta c} \dot{x}^\beta - \frac{1}{2} g_{ab,\alpha} (2\tau_\beta^a \dot{x}^\beta \dot{\theta}^b + \tau_\beta^a \dot{x}^\beta \tau_\delta^b \dot{x}^\delta) \right] \\
&\quad + \tilde{J}_b [\tau_{\alpha,\delta}^b - \tau_{\delta,\alpha}^b] \dot{x}^\delta - \frac{\partial}{\partial x^\alpha} \left[\frac{1}{2} g_{\delta b} \sigma^{bc} g_{\beta c} \dot{x}^\delta \dot{x}^\beta \right] \\
&= -\frac{1}{2} \left[g_{\delta b} \sigma^{bc} g_{\beta c} \dot{x}^\delta \dot{x}^\beta + g_{ad,\alpha} (2\tau_\beta^a \dot{x}^\beta \dot{\theta}^d + \tau_\beta^a \dot{x}^\beta \tau_\delta^d \dot{x}^\delta) \right] \\
&\quad + \tilde{J}_b [\tau_{\alpha,\delta}^b - \tau_{\delta,\alpha}^b] \dot{x}^\delta \tag{2.22}
\end{aligned}$$

Using the controlled conserved quantity we get

$$\dot{\theta}^d = g^{db} \left(\tilde{J}_b - [g_{\delta b} + g_{be} \tau_\delta^e] \dot{x}^\delta \right) \tag{2.23}$$

and hence the preceding expression for $\mathcal{E}_x(L_{\tau,\sigma})$ becomes

$$\begin{aligned}
\mathcal{E}_x(L_{\tau,\sigma}) &= -\frac{1}{2} \left[g_{\delta b} \sigma^{bc} g_{\beta c} - 2g_{ad,\alpha} \tau_\beta^a g^{bd} g_{\delta b} - g_{ad,\alpha} \tau_\beta^a \tau_\delta^d \right] \dot{x}^\delta \dot{x}^\beta \\
&\quad + \tilde{J}_b [\tau_{\alpha,\delta}^b - \tau_{\delta,\alpha}^b - g^{db} g_{ad,\alpha} \tau_\delta^a] \dot{x}^\delta \tag{2.24}
\end{aligned}$$

Using the assumption M-1 again to eliminate τ in the first line, we get

$$\begin{aligned}
\mathcal{E}_x(L_{\tau,\sigma}) &= -\frac{1}{2} g_{\delta b} g_{\beta c} \left[\sigma^{bc} g_{\alpha} + 2g_{ad,\alpha} \sigma^{ac} g^{bd} - g_{ad,\alpha} \sigma^{ac} \sigma^{db} \right] \dot{x}^\delta \dot{x}^\beta \\
&\quad + \tilde{J}_b [\tau_{\alpha,\delta}^b - \tau_{\delta,\alpha}^b - g^{db} g_{ad,\alpha} \tau_\delta^a] \dot{x}^\delta \\
&= \frac{1}{2} g_{\delta b} g_{\beta c} \sigma^{ac} \left[\sigma^{bd} (\sigma_{ad,\alpha} + g_{ad,\alpha}) - 2g^{bd} g_{ad,\alpha} \right] \dot{x}^\delta \dot{x}^\beta \\
&\quad + \tilde{J}_b [\tau_{\alpha,\delta}^b - \tau_{\delta,\alpha}^b - g^{db} g_{ad,\alpha} \tau_\delta^a] \dot{x}^\delta \tag{2.25}
\end{aligned}$$

Now we are ready to state our second two assumptions:

Assumption M-2. $\sigma^{bd} (\sigma_{ad,\alpha} + g_{ad,\alpha}) = 2g^{bd} g_{ad,\alpha}$

Assumption M-3. $\tau_{\alpha,\delta}^b - \tau_{\delta,\alpha}^b - g^{db} g_{ad,\alpha} \tau_\delta^a = 0$.

The following theorem gives sufficient conditions for matching.

Theorem 2.2 (First Matching Theorem) *Under Assumptions M-1, M-2, M-3, the Euler-Lagrange equations for the controlled Lagrangian $L_{\tau,\sigma}$ given by (2.3) coincide with the controlled Euler-Lagrange equations (2.6).*

Simplified Matching Assumptions. Consider the following

1. $\sigma_{ab} = \sigma g_{ab}$ for a constant σ (this defines σ_{ab}),

2. g_{ab} is independent of x^α (a condition on the metric tensor),
3. $\tau_\alpha^b = -(1/\sigma)g^{ab}g_{\alpha a}$ (this defines τ_α^b),
4. $g_{\alpha a, \delta} = g_{\delta a, \alpha}$ (a second condition on the metric).

If these hold, then all three of M-1, M-2 and M-3 hold, so we have matching. The second and fourth of the Simplified Matching Assumptions imply that the mechanical connection $g^{ab}g_{\alpha a}$ for the given system is flat, i.e., systems that satisfy the Simplified Matching Assumptions lack gyroscopic forces. The σ in this case is a free variable and can be interpreted as the control gain. These simplified conditions hold for the case of the inverted pendulum on a cart discussed in §1.2.

As we have mentioned, this theorem is generalized to incorporate the g_ρ terms in companion papers, so that we will find a more general matching theorem.

The following remark illustrates that care must be taken in relating the controlled to the uncontrolled case: if one sets σ equal to the identity in the first simplified matching assumption, the τ -horizontal and τ -vertical projections (2.9) do not reduce to the uncontrolled projections (2.7), but to the trivial projections. Rather, to recover the original projections, the one form τ should be taken to be trivial.

3 The Control Law and Stabilization

Now that we have achieved matching in the Euler-Lagrange equations for the shape variables, we can proceed to determine the control law and then conditions under which stabilization is achieved. We continue to restrict to the case in which $g_\rho = g$.

3.1 Determination of the Control Law

The control law is determined from the difference between the θ^a Euler-Lagrange equations for the controlled and the uncontrolled Lagrangians. In our case we have arranged to not break the symmetry, and so we may determine the control law from the difference between the two conservation laws.

To do this, we start with the relation

$$\tilde{J}_a = J_a + g_{ab}\tau_\alpha^b \dot{x}^\alpha, \quad (3.1)$$

and since \tilde{J}_a is conserved, we may write

$$\begin{aligned} u_a &= \frac{d}{dt} J_a = \frac{d}{dt} \tilde{J}_a - \frac{d}{dt} (g_{ab}\tau_\alpha^b \dot{x}^\alpha) = -\frac{d}{dt} (g_{ab}\tau_\alpha^b \dot{x}^\alpha) \\ &= -\left(g_{ab, \delta} \tau_\alpha^b \dot{x}^\alpha \dot{x}^\delta + g_{ab} \tau_{\alpha, \delta}^b \dot{x}^\alpha \dot{x}^\delta + g_{ab} \tau_\alpha^b \ddot{x}^\alpha \right) \end{aligned} \quad (3.2)$$

Our final control law does not depend on accelerations: we eliminate the accelerations \ddot{x}^α from this expression for the control by making use of the fact that the

Euler-Lagrange equations for x hold (for both L and $L_{\tau,\sigma}$). Using (2.4), and the fact that θ^a is cyclic, the explicit x^α -Euler-Lagrange equation is

$$g_{\alpha\beta}\ddot{x}^\beta + \left(g_{\alpha\beta,\gamma} - \frac{1}{2}g_{\beta\gamma,\alpha}\right)\dot{x}^\beta\dot{x}^\gamma + (g_{\alpha a,\gamma} - g_{\gamma a,\alpha})\dot{x}^\gamma\dot{\theta}^a - \frac{1}{2}g_{ab,\alpha}\dot{\theta}^a\dot{\theta}^b + g_{\alpha a}\ddot{\theta}^a = -\frac{\partial V}{\partial x^\alpha}. \quad (3.3)$$

Next, we use the θ^a -Euler-Lagrange equation for the controlled Lagrangian to determine $\ddot{\theta}^a$. That is, we simply write out the conservation law for \tilde{J}_a . Setting the time derivative of \tilde{J}_a from equation (2.12) equal to zero, we get

$$\left(g_{\alpha a,\delta} + g_{ab,\delta}\tau_\alpha^b + g_{ab}\tau_{\alpha,\delta}^b\right)\dot{x}^\alpha\dot{x}^\delta + g_{\alpha a}\ddot{x}^\alpha + g_{ab,\delta}\dot{\theta}^a\dot{x}^\delta + g_{ab}\ddot{\theta}^b + g_{ab}\tau_\alpha^b\ddot{x}^\alpha = 0 \quad (3.4)$$

and hence

$$\ddot{\theta}^d = -g^{da} \left[\left(g_{\alpha a,\delta} + g_{ab,\delta}\tau_\alpha^b + g_{ab}\tau_{\alpha,\delta}^b\right)\dot{x}^\alpha\dot{x}^\delta + g_{\alpha a}\ddot{x}^\alpha + g_{ab,\delta}\dot{\theta}^a\dot{x}^\delta \right] - \tau_\alpha^d\ddot{x}^\alpha. \quad (3.5)$$

Substituting (3.5) into (3.3) gives

$$\begin{aligned} & \left(g_{\alpha\beta} - g_{\alpha d}\tau_\beta^d - g_{\alpha d}g^{da}g_{\beta a}\right)\ddot{x}^\beta \\ & + \left[g_{\alpha\beta,\gamma} - \frac{1}{2}g_{\beta\gamma,\alpha} - g_{\alpha d}g^{da}\left(g_{\beta a,\gamma} + g_{ab,\gamma}\tau_\beta^b + g_{ab}\tau_{\beta,\gamma}^b\right)\right]\dot{x}^\beta\dot{x}^\gamma \\ & + \left(g_{\alpha a,\gamma} - g_{\gamma a,\alpha} - g_{\alpha d}g^{db}g_{ab,\gamma}\right)\dot{x}^\gamma\dot{\theta}^a - \frac{1}{2}g_{ab,\alpha}\dot{\theta}^a\dot{\theta}^b = -\frac{\partial V}{\partial x^\alpha}. \end{aligned} \quad (3.6)$$

The control law is now determined by substituting this equation into (3.2). So far, our derivation is rather general, but we can simplify things somewhat by using our assumptions. Using M-1 and M-3, (3.6) simplifies to

$$\begin{aligned} & \left(g_{\alpha\beta} + g_{\alpha d}\left[\sigma^{da} - g^{da}\right]g_{\beta a}\right)\ddot{x}^\beta \\ & + \left[g_{\alpha\beta,\gamma} - \frac{1}{2}g_{\beta\gamma,\alpha} - g_{\alpha d}g^{da}g_{\beta a,\gamma} - g_{\alpha d}\tau_{\beta,\gamma}^d\right]\dot{x}^\beta\dot{x}^\gamma \\ & + \left(g_{\alpha a,\gamma} - g_{\gamma a,\alpha} - g_{\alpha d}g^{db}g_{ab,\gamma}\right)\dot{x}^\gamma\dot{\theta}^a - \frac{1}{2}g_{ab,\alpha}\dot{\theta}^a\dot{\theta}^b = -\frac{\partial V}{\partial x^\alpha}. \end{aligned} \quad (3.7)$$

Now let

$$A_{\alpha\beta} = g_{\alpha\beta} + g_{\alpha d}\left[\sigma^{da} - g^{da}\right]g_{\beta a} \quad (3.8)$$

Assume that this matrix is invertible and let $A^{\alpha\beta}$ denote its inverse. Hence,

$$\begin{aligned} \ddot{x}^\delta & = -A^{\delta\alpha} \left[g_{\alpha\beta,\gamma} - \frac{1}{2}g_{\beta\gamma,\alpha} - g_{\alpha d}g^{da}g_{\beta a,\gamma} - g_{\alpha d}\tau_{\beta,\gamma}^d \right] \dot{x}^\beta\dot{x}^\gamma \\ & \quad - A^{\delta\alpha} \left(g_{\alpha a,\gamma} - g_{\gamma a,\alpha} - g_{\alpha d}g^{db}g_{ab,\gamma} \right) \dot{x}^\gamma\dot{\theta}^a \\ & \quad + A^{\delta\alpha} \frac{1}{2}g_{ab,\alpha}\dot{\theta}^a\dot{\theta}^b - A^{\delta\alpha} \frac{\partial V}{\partial x^\alpha}. \end{aligned} \quad (3.9)$$

Notice also that under M-3 $g_{ab,\delta}\tau_\alpha^b$ is skew-symmetric in the δ, α indices and hence the first term on the right hand side of the control law (3.2) vanishes. Substitution of (3.9) into the control law gives

$$u_a = - \left\{ g_{ab}\tau_{\beta,\gamma}^b - g_{ab}\tau_\delta^b A^{\delta\alpha} \left[g_{\alpha\beta,\gamma} - \frac{1}{2}g_{\beta\gamma,\alpha} - g_{\alpha d}g^{da}g_{\beta a,\gamma} - g_{\alpha d}\tau_{\beta,\gamma}^d \right] \right\} \dot{x}^\beta \dot{x}^\gamma - g_{ab}\tau_\delta^b A^{\delta\alpha} \left[- \left(g_{\alpha c,\gamma} - g_{\gamma c,\alpha} - g_{\alpha d}g^{db}g_{cb,\gamma} \right) \dot{x}^\gamma \dot{\theta}^c + \frac{1}{2}g_{cb,\alpha}\dot{\theta}^c \dot{\theta}^b - \frac{\partial V}{\partial x^\alpha} \right]. \quad (3.10)$$

One may eliminate $\dot{\theta}^a$ if desired by making use of the relation

$$\dot{\theta}^b = g^{ab}\tilde{J}_a - \left(g^{ab}g_{\alpha a} + \tau_\alpha^b \right) \dot{x}^\alpha = g^{ab}\tilde{J}_a - \left[g^{ab} - \sigma^{ab} \right] g_{\alpha a}\dot{x}^\alpha \quad (3.11)$$

Under the Simplified Matching Assumptions given after the First Matching Theorem 2.2, the coefficients of the terms multiplying θ vanish and the formula for the control becomes

$$u_a = \frac{1}{\sigma} \left\{ g_{\beta a,\gamma} - g_{\delta a}A^{\delta\alpha} \left[g_{\alpha\beta,\gamma} - \frac{1}{2}g_{\beta\gamma,\alpha} - \left(1 - \frac{1}{\sigma} \right) g_{\alpha d}g^{da}g_{\beta a,\gamma} \right] \right\} \dot{x}^\beta \dot{x}^\gamma - \frac{1}{\sigma}g_{\delta a}A^{\delta\alpha} \frac{\partial V}{\partial x^\alpha} \quad (3.12)$$

where

$$A_{\alpha\beta} = g_{\alpha\beta} - g_{\alpha d} \left(1 - \frac{1}{\sigma} \right) g^{da}g_{\beta a}. \quad (3.13)$$

Note that the control law only involves position and velocity feedback, not acceleration feedback.

Proposition 3.1 *Suppose the conditions of Theorem 2.2 hold (i.e., the First Matching Theorem holds with the controlled Lagrangian $L_{\tau,\sigma}$ defined by (2.3)). Suppose that $A_{\alpha\beta}$ defined by (3.8) is invertible. Then, (3.10) provides the corresponding feedback control law u as a function of positions and velocities only (i.e. there is no acceleration feedback). Furthermore, in the case that the Simplified Matching Assumptions hold, this feedback law simplifies to that given in (3.12) which is independent of the velocities of the symmetry variables.*

The above calculations make intrinsic geometric sense. For example, and we shall need this remark below, the matrix $A_{\alpha\beta}$ may be interpreted as the components of the horizontal metric (the shape space projected metric) for the controlled Lagrangian. Under Assumption M-1, the formula for the horizontal part of the metric is given by (see equation (2.9))

$$\text{Hor}_\tau(v_q) = \left(\dot{x}^\alpha, \left(\sigma^{ab} - g^{ab} \right) g_{\alpha b}\dot{x}^\alpha \right). \quad (3.14)$$

Intrinsically, the calculation of the horizontal kinetic energy expression is as follows (see the proof of the first matching theorem):

$$\begin{aligned}
K_{\text{hor}_\tau}(v_q) &:= \frac{1}{2} [g_\sigma(\text{Hor}_\tau v_q, \text{Hor}_\tau v_q)] \\
&= \frac{1}{2} [g_\sigma(\text{Hor}(v) - \tau(v)_Q, \text{Hor}(v) - \tau(v)_Q)] \\
&= \frac{1}{2} [g(\text{Hor}(v), \text{Hor}(v)) + g_\sigma(\tau(v)_Q, \tau(v)_Q)]. \tag{3.15}
\end{aligned}$$

In coordinates,

$$\begin{aligned}
\frac{1}{2}g(\text{Hor}(v), \text{Hor}(v)) &= \frac{1}{2}g_{\alpha\beta}\dot{x}^\alpha\dot{x}^\beta - g_{a\alpha}g^{ab}g_{b\beta}\dot{x}^\alpha\dot{x}^\beta + \frac{1}{2}g_{a\alpha}g^{ab}g_{b\beta}\dot{x}^\alpha\dot{x}^\beta \\
&= \frac{1}{2}\left(g_{\alpha\beta} - g_{a\alpha}g^{ab}g_{b\beta}\right)\dot{x}^\alpha\dot{x}^\beta \tag{3.16}
\end{aligned}$$

while under Assumption M-1 we have

$$\frac{1}{2}g_\sigma(\tau(v)_Q, \tau(v)_Q) = \frac{1}{2}\sigma_{ab}\left(-\sigma^{ad}g_{d\alpha}\right)\left(-\sigma^{be}g_{e\beta}\right)\dot{x}^\alpha\dot{x}^\beta = \frac{1}{2}\sigma^{ab}g_{a\alpha}g_{b\beta}\dot{x}^\alpha\dot{x}^\beta. \tag{3.17}$$

Adding these gives

Proposition 3.2 *The τ -horizontal kinetic energy is given by*

$$K_{\text{hor}_\tau}(v_q) = \frac{1}{2}A_{\alpha\beta}\dot{x}^\alpha\dot{x}^\beta. \tag{3.18}$$

3.2 Stabilization of Relative Equilibria.

Recall that a *relative equilibrium* for a mechanical system with symmetry is a solution of the equations that is simultaneously a one-parameter group orbit. When the symmetry groups are Euclidean groups, examples of these are *uniformly rotating and translating solutions*. A general introduction to and basic facts about relative equilibria can be found in Marsden [1992].

Since τ is horizontal, for any Lie algebra element $\xi \in \mathfrak{g}$, we have $\tau(\xi_Q(q)) = 0$. This implies the identity $L(\xi_Q(q)) = L_{\tau,\sigma}(\xi_Q(q))$.

Given a Lagrangian L and a Lie algebra element $\xi \in \mathfrak{g}$, the function $L_\xi(q) := L(\xi_Q(q))$ is called the associated *locked Lagrangian*. Thus, from the identity $L(\xi_Q(q)) = L_{\tau,\sigma}(\xi_Q(q))$ noted in the preceding paragraph, we conclude that L and $L_{\tau,\sigma}$ have the same locked Lagrangian.

It is known that relative equilibria are the critical points of the locked Lagrangian (see Lewis [1992], Prop 2.3 and Wang and Krishnaprasad [1992]); this is a generalization of the classical criterion, going back to Routh around 1850, which states that *relative equilibrium are critical points of either the amended or augmented potential*.¹ Intuitively, the modification of the Lagrangian to the controlled Lagrangian, while affecting the kinetic energy, does not affect the augmented potential. Therefore, we conclude the following:

¹The amended potential is recalled below in Equation (3.19). The augmented potential is given by a similar formula using generalized *angular velocities* rather than *angular momenta*.

Proposition 3.3 *The relative equilibria for L and $L_{\tau,\sigma}$ are the same.*

One can now use the energy momentum method (Simo, Lewis, and Marsden [1991], Marsden [1992]), especially its Lagrangian formulation (Lewis [1992], Wang and Krishnaprasad [1992]) to ascertain stability.

From general considerations, we know that a relative equilibrium is a fixed point of the reduced dynamics on shape space. As such, it must satisfy $\dot{x}^\alpha = 0$. To emphasize that this corresponds to an equilibrium value, we shall sometimes write the equilibrium point as x_e , or in coordinates, x_e^α . Consequently, from equation (2.13), the momentum at a relative equilibrium is the same for the free and for the controlled system. We call this value μ , with components μ_a , or if there is danger of confusion, by μ_a^e , where the superscript e refers to the *equilibrium value*.

Next, we give a criterion for stability of control systems that are described by a controlled Lagrangian of the form $L_{\tau,\sigma}$ given by (2.3).

Theorem 3.4 *Suppose the conditions of Theorem 2.2 hold (i.e., the First Matching Theorem holds with the controlled Lagrangian $L_{\tau,\sigma}$). A point x_e^α is a relative equilibrium if and only if it is a critical point of V_μ where μ is the value of the equilibrium momentum and where V_μ is the **amended potential** defined by*

$$V_\mu(x^\alpha) = V(x^\alpha) + \frac{1}{2}g^{ab}\mu_a\mu_b. \quad (3.19)$$

Then, the system is stabilized about the given equilibrium if the second variation of

$$E_\mu := \frac{1}{2}A_{\alpha\beta}\dot{x}^\alpha\dot{x}^\beta + V_\mu \quad (3.20)$$

(as a function of the variables x^α and where $A_{\alpha\beta}$ is defined in equation (3.8)) evaluated at the equilibrium is definite.

Proof. The proof proceeds in a standard way following the energy-momentum method by showing that E_μ is the reduced expression for the energy of the system. This calculation is done for a general Lagrangian in, for example, Marsden [1992], and is here applied to $L_{\tau,\sigma}$ using the fact, proved earlier (see equation (3.18)) that the horizontal part of the τ -kinetic energy is, under Assumption M-1, $\frac{1}{2}A_{\alpha\beta}\dot{x}^\alpha\dot{x}^\beta$ to get the result. ■

Remarks.

1. In the special case when g_{ab} is constant, the extra term in the amended potential is a constant and so does not contribute to the second variation.
2. One has stability modulo the (Abelian) group G in the unreduced space. (See Leonard and Marsden [1997] for more sophisticated applications in which one gets stability modulo a subgroup.) Note further that since the equilibrium of interest for a balance system is a maximum of the potential energy and we

are not modifying the potential here, our controller will in general lead to a local maximum in the reduced space. As discussed in §5 the addition of active dissipation then leads to a robust asymptotically stable equilibrium.

3. Note that the energy momentum function E_μ depends on the system gains.
4. If the system has an additional symmetry group, then one can, of course, use the energy momentum method to study stability of relative equilibria for that group. We shall see an example of a system with another symmetry group in the inverted spherical pendulum below. The controlled Euler–Poincaré equations may also be viewed this way—these are studied in companion papers.

4 Inverted Pendula

In this section we illustrate the results of the preceding sections with two examples. In the first subsection, we re-examine the inverted pendulum on a cart and show that a direct application of the matching theorem of §2 and stabilization theorem of §3 produce the stabilizing control law derived in §1.2. In the second subsection we show how to apply these techniques to the case of the inverted spherical pendulum.

4.1 Reprise of the Inverted Pendulum on a Cart

Recall that the configuration space is $Q = S \times G$ where $S = S^1$ describes the angle ϕ of the pendulum and $G = \mathbb{R}$ describes the position s of the cart. When using the general theory, keep in mind that x in the general theory corresponds to ϕ here and that θ in the general theory corresponds to s here.

The Lagrangian. The Lagrangian is

$$L(\phi, \dot{\phi}, \dot{s}) = \frac{1}{2} \begin{bmatrix} \dot{\phi} & \dot{s} \end{bmatrix} \begin{bmatrix} \alpha & \beta \cos \phi \\ \beta \cos \phi & \gamma \end{bmatrix} \begin{bmatrix} \dot{\phi} \\ \dot{s} \end{bmatrix} + D \cos \phi$$

where α, β, γ and D are as defined in §1.2.

Controlled Lagrangian and Matching. We apply Theorem 2.2 to get the controlled Lagrangian that matches the controlled Euler-Lagrange equations (1.10). Since $G = \mathbb{R}$ is one-dimensional, both g_{ab} and σ_{ab} are scalars. We have that $g_{ab} = \gamma$. Let $\sigma_{ab} = \sigma\gamma$ where σ is a dimensionless scalar. Since g_{ab} is a constant, to satisfy M-2 we should also take σ to be a constant. To satisfy M-1, we choose

$$\tau_\phi^s = -\frac{1}{\sigma\gamma}\beta \cos \phi.$$

M-3 is then trivially satisfied, and the controlled Lagrangian provides matching. In fact, the Simplified Matching Assumptions hold. Following (2.2) the controlled

Lagrangian is

$$\begin{aligned}
L_{\tau,\sigma} &= L(\phi, \dot{\phi}, \dot{s} - \frac{\beta}{\sigma\gamma} \cos \phi \dot{\phi}) + \frac{1}{2} \sigma \gamma \left(\frac{\beta}{\sigma\gamma} \cos \phi \dot{\phi} \right)^2 + D \cos \phi \\
&= \frac{1}{2} (\alpha \dot{\phi}^2 + 2\beta \cos \phi (\dot{s} - \frac{\beta}{\sigma\gamma} \cos \phi \dot{\phi}) \dot{\phi} + \gamma (\dot{s} - \frac{\beta}{\sigma\gamma} \cos \phi \dot{\phi})^2) + \frac{1}{2} \frac{\beta^2}{\sigma\gamma} \cos^2 \phi \dot{\phi}^2 \\
&\quad + D \cos \phi.
\end{aligned} \tag{4.1}$$

Note that defining $\kappa := -1/\sigma$ and substituting for σ in (4.1), we recover the controlled Lagrangian of (1.11), where $k(\phi)$ is defined by (1.17).

Control Law. Using (3.2), the control law is

$$u = \frac{d}{dt} \left(\frac{\beta}{\sigma} \cos \phi \dot{\phi} \right) = -\frac{d}{dt} (\kappa \beta \cos \phi \dot{\phi}).$$

We can use the general formula (3.12) to calculate this control law with the acceleration term $\ddot{\phi}$ eliminated.

In this case, $-g_{ab} \tau_{\mu,\delta}^b \dot{x}^\mu \dot{x}^\delta = \kappa \beta \sin \phi \dot{\phi}^2$, the matrix (3.8) becomes the scalar

$$A = \alpha - \frac{\beta^2}{\gamma} (1 + \kappa) \cos^2 \phi,$$

and

$$\begin{aligned}
g_{ab} \tau_\delta^b &\left[\left(g_{\mu\nu,\gamma} - \frac{1}{2} g_{\nu\gamma,\mu} - g_{\mu c} \tau_{\nu,\gamma}^c - g_{\mu c} g^{cb} g_{\nu b,\gamma} \right) \dot{x}^\nu \dot{x}^\gamma + V_{,\mu} \right] \\
&= (\kappa \beta \cos \phi) \left[\left(\frac{\beta^2}{\gamma} \cos \phi \sin \phi + \frac{\beta^2 \kappa}{\gamma} \cos \phi \sin \phi \right) \dot{\phi}^2 + D \sin \phi \right].
\end{aligned}$$

Substituting into the general formula (3.12), we obtain the nonlinear pendulum-cart control law (1.18).

Stabilization. Following Theorem 3.4, the relative equilibrium $\phi = \dot{\phi} = \dot{s} = 0$ is stable if the second variation of

$$\frac{1}{2} \left(\alpha + \beta^2 \cos^2 \phi \left(\frac{1}{\sigma\gamma} - \frac{1}{\gamma} \right) \right) \dot{\phi}^2 - D \cos \phi$$

is definite when evaluated at this equilibrium. This requires that the matrix

$$\begin{pmatrix} D & 0 \\ 0 & \alpha + \beta^2 \left(\frac{1}{\sigma\gamma} - \frac{1}{\gamma} \right) \end{pmatrix}$$

be positive or negative definite. Since $D = -mgl < 0$, the matrix will be negative definite if

$$\alpha + \beta^2 \left(\frac{1}{\sigma\gamma} - \frac{1}{\gamma} \right) < 0.$$

i.e., if

$$\frac{1}{\sigma} < \frac{\beta^2 - \alpha\gamma}{\beta^2}.$$

Equivalently, using $\kappa = -1/\sigma$, the relative equilibrium is stable if

$$\kappa > \frac{\alpha\gamma - \beta^2}{\beta^2} = \frac{M}{m},$$

which is the stability condition (1.19).

4.2 The Spherical Pendulum

In this section we consider the controlled spherical pendulum on a cart in the xy -plane. This generalizes the planar pendulum example and provides a highly nontrivial example of matching and stabilization in the case where we only need a controlled Lagrangian of the form $L_{\tau,\sigma}$. In this case we have independent controls that can move the cart in the x and y directions.

Consider then a spherical pendulum with bob of mass m on a movable base of mass M , as in Figure 4.1. The base is idealized to be a point (or a symmetric planar body) as this simplifies the calculations without affecting the essential dynamics.

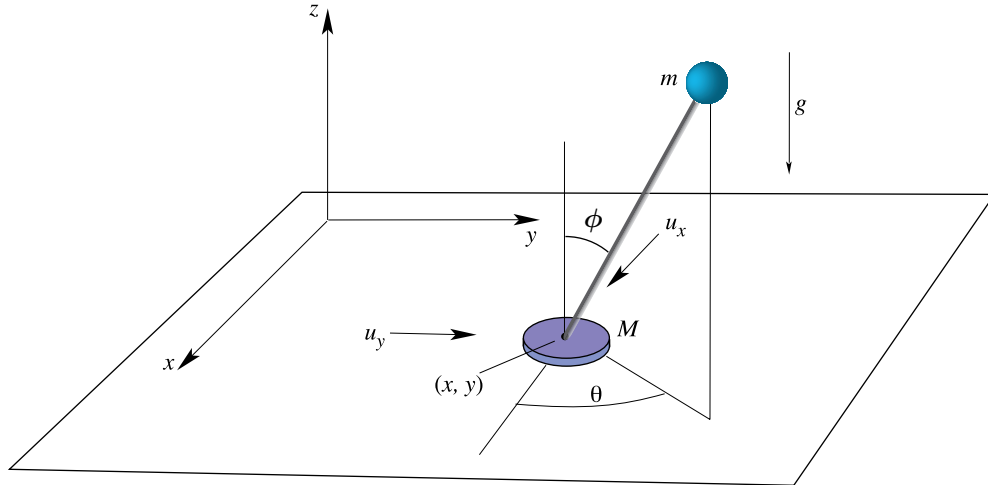


Figure 4.1: The inverted spherical pendulum on a cart.

The Lagrangian. The free Lagrangian for the spherical pendulum on a cart is

$$\begin{aligned} L = & \frac{1}{2}M(\dot{x}^2 + \dot{y}^2) + \frac{1}{2}m \left(\dot{x}^2 + \dot{y}^2 + r^2\dot{\phi}^2 + r^2 \sin^2 \phi \dot{\theta}^2 + 2r \cos \phi \dot{\phi}(\dot{x} \cos \theta + \dot{y} \sin \theta) \right. \\ & \left. + 2r \sin \phi \dot{\theta}(-\dot{x} \sin \theta + \dot{y} \cos \theta) \right) + mgr(1 - \cos \phi) \end{aligned} \quad (4.2)$$

where ϕ and θ are spherical coordinates measured in a frame with origin fixed on the (point) cart, but with orientation that remains fixed with respect to inertial space. ϕ represents the deflection from the vertical while θ represents the angle between the pendulum and the x -axis. The controlled equations are the Lagrangian equations with control forces u_x and u_y in the x and y equations respectively. Note that the Lagrangian is cyclic in x and y . However, the system is in fact $SE(2)$ invariant, as one would expect physically.

Consider the action of $SE(2)$ on $\mathbb{R}^2 \times S^1$ given by

$$(x, y, \theta) \rightarrow (x \cos \alpha - y \sin \alpha + a, x \sin \alpha + y \cos \alpha + b, \theta + \alpha) \quad (4.3)$$

with induced action on $TSE(2)$

$$(\dot{x}, \dot{y}, \dot{\theta}) \rightarrow (\dot{x} \cos \alpha - \dot{y} \sin \alpha, \dot{x} \sin \alpha + \dot{y} \cos \alpha + b, \dot{\theta}). \quad (4.4)$$

A computation shows that the Lagrangian is indeed invariant under this action (thus giving rise to three conservation laws).

However, for the purposes of applying the theory discussed above we will *assume* the symmetry directions are the x and y directions ignoring for the moment the additional S^1 symmetry. We shall return to this later in this section. The key point here is that the controls act in the x and y directions and pick out the part of the symmetry group to be used in the matching theory. The remainder of the group is dealt with when doing stabilization.

Controlled Lagrangian and Matching. Note that twice the kinetic energy for the spherical pendulum on the cart can be written as

$$\begin{bmatrix} \dot{\theta} \\ \dot{\phi} \\ \dot{x} \\ \dot{y} \end{bmatrix}^T \begin{bmatrix} mr^2 \sin^2 \phi & 0 & -mr \sin \phi \sin \theta & mr \sin \phi \cos \theta \\ 0 & mr^2 & mr \cos \phi \cos \theta & mr \cos \phi \sin \theta \\ -mr \sin \phi \sin \theta & mr \cos \phi \cos \theta & m + M & 0 \\ mr \sin \phi \cos \theta & mr \cos \phi \sin \theta & 0 & m + M \end{bmatrix} \begin{bmatrix} \dot{\theta} \\ \dot{\phi} \\ \dot{x} \\ \dot{y} \end{bmatrix}. \quad (4.5)$$

So, it can easily be seen that g_{ab} is constant and, in addition, since

$$\begin{aligned} \frac{\partial}{\partial \theta}(\cos \phi \cos \theta) &= \frac{\partial}{\partial \phi}(-\sin \phi \sin \theta), \\ \frac{\partial}{\partial \theta}(\cos \phi \sin \theta) &= \frac{\partial}{\partial \phi}(\sin \phi \cos \theta), \end{aligned}$$

$g_{a\alpha,\delta} = g_{\delta a,\alpha}$ holds. We choose $\sigma_{ab} = \sigma g_{ab}$, where σ is a constant, and $\tau_\alpha^b = -(1/\sigma)g^{ab}g_{\alpha a}$. Then, Assumptions M-1, M-2 and M-3 all hold (since the Simplified Matching Assumptions hold) and we get matching by Theorem 2.2. In this case, we

have

$$\begin{aligned}
\tau_\phi^x &= -\frac{mr}{\sigma(M+m)} \cos \phi \cos \theta \\
\tau_\theta^x &= -\frac{mr}{\sigma(M+m)} (-\sin \phi \sin \theta) \\
\tau_\phi^y &= -\frac{mr}{\sigma(M+m)} \cos \phi \sin \theta \\
\tau_\theta^y &= -\frac{mr}{\sigma(M+m)} \sin \phi \cos \theta
\end{aligned}$$

Using Theorem 2.1, the controlled Lagrangian is given by the free Lagrangian with velocity shifts

$$\begin{aligned}
\dot{x} &\rightarrow \dot{x} - \frac{mr}{\sigma(M+m)} (\cos \phi \cos \theta \dot{\phi} - \sin \phi \sin \theta \dot{\theta}) \\
\dot{y} &\rightarrow \dot{y} - \frac{mr}{\sigma(M+m)} (\cos \phi \sin \theta \dot{\phi} + \sin \phi \cos \theta \dot{\theta})
\end{aligned}$$

and with the addition of the term

$$\begin{aligned}
\frac{1}{2} g_\sigma(\tau(v)_Q, \tau(v)_Q) &= \frac{1}{2} \frac{m^2 r^2}{\sigma(M+m)} \left\{ (\cos \phi \cos \theta \dot{\phi} - \sin \phi \sin \theta \dot{\theta})^2 \right. \\
&\quad \left. + (\cos \phi \sin \theta \dot{\phi} + \sin \phi \cos \theta \dot{\theta})^2 \right\} \\
&= \frac{1}{2} \frac{m^2 r^2}{\sigma(M+m)} (\cos^2 \phi \dot{\phi}^2 + \sin^2 \phi \dot{\theta}^2). \tag{4.6}
\end{aligned}$$

Control Law. Using (3.2), the control law is

$$\begin{aligned}
u_x &= -\frac{d}{dt} (g_{xx} \tau_\alpha^x \dot{x}^\alpha + g_{xy} \tau_\alpha^y \dot{y}^\alpha) \\
&= \frac{d}{dt} \frac{mr}{\sigma} (\cos \phi \cos \theta \dot{\phi} - \sin \phi \sin \theta \dot{\theta}), \\
u_y &= -\frac{d}{dt} (g_{yx} \tau_\alpha^x \dot{x}^\alpha + g_{yy} \tau_\alpha^y \dot{y}^\alpha) \\
&= \frac{d}{dt} \frac{mr}{\sigma} (\cos \phi \sin \theta \dot{\phi} + \sin \phi \cos \theta \dot{\theta}).
\end{aligned}$$

We can use the general formula (3.12) to calculate this control law with the acceleration terms eliminated. We begin by computing the matrix (3.8) and find

$$A_{\alpha\beta} = \begin{bmatrix} mr^2 \sin^2 \phi - \left(1 - \frac{1}{\sigma}\right) \frac{m^2 r^2}{M+m} \sin^2 \phi & 0 \\ 0 & mr^2 - \left(1 - \frac{1}{\sigma}\right) \frac{m^2 r^2}{M+m} \cos^2 \phi \end{bmatrix}. \tag{4.7}$$

We now compute successively the terms in (3.12). Consider firstly $g_{a\beta,\gamma}\dot{x}^\beta\dot{x}^\gamma$. We have

$$\begin{aligned} g_{x\beta,\gamma}\dot{x}^\beta\dot{x}^\gamma &= -mr \left(\sin \phi \cos \theta (\dot{\theta}^2 + \dot{\phi}^2) + 2 \cos \phi \sin \theta \dot{\theta} \dot{\phi} \right) \\ g_{y\beta,\gamma} \dot{x}^\beta \dot{x}^\gamma &= mr \left(-\sin \phi \sin \theta (\dot{\theta}^2 + \dot{\phi}^2) + 2 \cos \phi \cos \theta \dot{\theta} \dot{\phi} \right). \end{aligned} \quad (4.8)$$

We next consider the expression

$$B_\alpha \equiv \left[g_{\alpha\beta,\gamma} - \frac{1}{2} g_{\beta\gamma,\alpha} - \left(1 - \frac{1}{\sigma} \right) g_{\alpha d} g^{da} g_{\beta a,\gamma} \right] \dot{x}^\beta \dot{x}^\gamma. \quad (4.9)$$

For $\alpha = \theta$ this yields the expression

$$B_\theta \equiv 2mr^2 \sin \phi \cos \phi \dot{\theta} \dot{\phi} - \left(1 - \frac{1}{\sigma} \right) \frac{2m^2 r^2}{M+m} \sin \phi \cos \phi \dot{\theta} \dot{\phi}, \quad (4.10)$$

and for $\alpha = \phi$ we obtain

$$B_\phi \equiv -mr^2 \sin \phi \cos \phi \dot{\theta}^2 + \left(1 - \frac{1}{\sigma} \right) \frac{m^2 r^2}{M+m} \sin \phi \cos \phi \left(\dot{\theta}^2 + \dot{\phi}^2 \right). \quad (4.11)$$

Finally, we consider the expression $g_{a\delta} A^{\delta\alpha} V_{,\alpha}$. We have

$$\begin{aligned} g_{x\delta} A^{\delta\alpha} V_{,\alpha} &= -\frac{m^2 r^2 g}{A_{\phi\phi}} \cos \phi \sin \phi \cos \theta \\ g_{y\delta} A^{\delta\alpha} V_{,\alpha} &= -\frac{m^2 r^2 g}{A_{\phi\phi}} \cos \phi \sin \phi \sin \theta. \end{aligned} \quad (4.12)$$

Using equations (4.7)–(4.12) we obtain the complete control law:

$$u_x = \frac{-m^2 r^3}{\sigma A_{\phi\phi}} \sin \phi \cos \theta \left(\sin^2 \phi \dot{\theta}^2 + \dot{\phi}^2 - \frac{g}{r} \cos \phi \right) \quad (4.13)$$

$$u_y = \frac{-m^2 r^3}{\sigma A_{\phi\phi}} \sin \phi \sin \theta \left(\sin^2 \phi \dot{\theta}^2 + \dot{\phi}^2 - \frac{g}{r} \cos \phi \right). \quad (4.14)$$

Stabilization. We now use Theorem 3.4 to analyze stability of the pendulum about its upright state, modulo motion in the plane. We have

$$\begin{aligned} \frac{1}{2} A_{\alpha\beta} \dot{x}^\alpha \dot{x}^\beta + V &= \frac{1}{2} mr^2 \left\{ \left(1 + \frac{m}{M+m} \left(\frac{1-\sigma}{\sigma} \right) \cos^2 \phi \right) \dot{\phi}^2 \right. \\ &\quad \left. + \left(1 + \frac{m}{M+m} \left(\frac{1-\sigma}{\sigma} \right) \sin^2 \phi \right) \dot{\theta}^2 \right\} - mgr(1 - \cos \phi). \end{aligned} \quad (4.15)$$

Note that this is independent of θ , reflecting an additional rotational symmetry in this case. Consider the relative equilibrium $\phi = \dot{\phi} = 0$. Then, modulo the θ directions, the second variation of (4.15) is given by the matrix

$$\begin{bmatrix} mr^2 \left(1 + \frac{m}{M+m} \left(\frac{1-\sigma}{\sigma} \right) \right) & 0 \\ 0 & mr^2 \left(\frac{m}{M+m} \left(\frac{1-\sigma}{\sigma} \right) \right) \mu^2 - mgr \end{bmatrix}$$

where $\dot{\theta} = \mu$.

Setting $\sigma = -1/\kappa$ as in the planar pendulum we thus have the following criteria for stability:

- If $\mu = 0$, we require

$$\left(1 - \frac{m}{M+m} (\kappa + 1) \right) < 0$$

i.e. $\kappa > M/m$,

- If $\mu > 0$, we need

$$\left(1 - \frac{m}{M+m} (\kappa + 1) \right) \quad \text{and} \quad mr^2 \left(-\frac{m}{M+m} (\kappa + 1) \right) \mu^2 - mgr$$

to have the same sign.

Remark. In this analysis, the extra S^1 symmetry is simply ignored, even though it does lead to an additional conservation law. This is because the straight upright solution is a relative equilibrium for just the translation group. If we were trying to stabilize an inverted uniformly rotating equilibrium then we would have to take this extra S^1 symmetry into account. In principle this is straightforward.

5 Asymptotic Stabilization

We now undertake to modify our stabilizing control laws to obtain *asymptotic stabilization*. This is done, roughly speaking, by using the controls to simulate dissipation. However, this is not entirely straightforward, primarily because the energy for the controlled system we consider has a *maximum* at the relative equilibrium in the x, \dot{x} variables, but the θ direction is still a symmetry direction as discussed above. We will use the feedback controls to give *active* dissipation. (Note that one can easily adjust the theory below if the controlled system has a minimum at the relative equilibrium in the x, \dot{x} variables).

5.1 Theory

To achieve our goal of converting a relative equilibrium that has been stabilized by the method of controlled Lagrangians into an *asymptotically* stable one, we proceed in the following step-by-step manner. The general technique here is, at least philosophically, closely related to that of Åström and Furuta [1996]. Related ideas on asymptotic stabilization may be found in Fradkov [1996] for example.

1. Start with the original controlled system

$$\begin{aligned} \frac{d}{dt} \frac{\partial L}{\partial \dot{x}^\alpha} - \frac{\partial L}{\partial x^\alpha} &= 0 \\ \frac{d}{dt} \frac{\partial L}{\partial \dot{\theta}^a} &= u_a. \end{aligned} \quad (5.1)$$

2. Choose a relative equilibrium, say $x = x_e$ for L that is to be stabilized. Let it have momentum μ and velocity vector ξ , so that $\xi^a = g^{ab} \mu_b$.
3. Break the control into a *conservative* and *dissipative* piece: $u_a = u_a^{\text{cons}} + u_a^{\text{diss}}$, each piece of which will be defined as we proceed.
4. Assume that the hypotheses of the First Matching Theorem (2.2) hold and choose $u_a^{\text{cons}} = -(d/dt)(g_{ab} \tau_\alpha^b \dot{x}^\alpha)$ according to the controlled Lagrangian stabilizing techniques developed so far.
5. Rewrite the system system (5.1) with $u_a = u_a^{\text{cons}} + u_a^{\text{diss}}$ in terms of the controlled Lagrangian. In fact, one has the following

Proposition 5.1 *Using the procedure just outlined, the system (5.1) is equivalent to*

$$\begin{aligned} \frac{d}{dt} \frac{\partial L_{\tau,\sigma}}{\partial \dot{x}^\alpha} - \frac{\partial L_{\tau,\sigma}}{\partial x^\alpha} &= \tau_\alpha^b u_b^{\text{diss}} \\ \frac{d}{dt} \frac{\partial L_{\tau,\sigma}}{\partial \dot{\theta}^a} &= u_a^{\text{diss}}. \end{aligned} \quad (5.2)$$

The explicit formula for the control law with accelerations eliminated is given by

$$u_a = (\text{rhs of (3.10)}) + g_{ab} \tau_\delta^b A^{\delta\alpha} g_{\alpha d} g^{dc} u_c^{\text{diss}} + u_a^{\text{diss}}. \quad (5.3)$$

Proof. The strategy is to repeat the derivation of the matching equations. First of all, notice that the second equation in the set (5.2) can be equivalently written as

$$\frac{d}{dt} (\tilde{J}_a) = u_a^{\text{diss}}.$$

Subtracting this from the equation

$$\frac{d}{dt} J_a = u_a^{\text{cons}} + u_a^{\text{diss}}$$

shows that the second equation in (5.2) is equivalent to the equation

$$u_a^{\text{cons}} = \frac{d}{dt} \left(J_a - \tilde{J}_a \right)$$

which, as in §3.1 determines the control law u_a^{cons} . The explicit formula (5.3) is derived following the same steps as in §3.1 but with the zero on the right hand side of (3.4) replaced with u_a^{diss} .

Now one goes through the computation of the Euler-Lagrange expression $\mathcal{E}(L_{\tau,\sigma})$ given in the proof of the First Matching Theorem. The critical thing is that in equation (2.19) one does not replace the time derivative of \tilde{J}_b with zero, but rather with u_b^{diss} . All other terms disappear, as in the proof of the First Matching Theorem, leaving the first equation in (5.2) as stated. ■

The Controlled Liapunov Function. The next step in the procedure is

6. Find a candidate Liapunov function (to be called \mathcal{V}_μ).

Of course, it is natural to make use of the function that we employed to give us stability. However, as we shall see, this function must be modified in a nontrivial way.

Let $E_{\tau,\sigma}$ be the energy function for the controlled Lagrangian $L_{\tau,\sigma}$ and let $E_{\tau,\sigma}^\xi$ be the controlled *augmented* energy function defined by

$$E_{\tau,\sigma}^\xi = E_{\tau,\sigma} - \tilde{J}_b \xi^b \quad (5.4)$$

The augmented energy has the property that its restriction to a level set of the momentum gives the energy function

$$E_\mu := \frac{1}{2} A_{\alpha\beta} \dot{x}^\alpha \dot{x}^\beta + V_\mu \quad (5.5)$$

used in the stability test (this is seen by a direct calculation or by using facts from the energy-momentum method or Routh reduction). Here, μ is the value of the momentum at equilibrium and V_μ is the amended potential (see equation (3.19)). Note that at equilibrium, the value of \tilde{J}_a is the same as that of J_a ; i.e., $\tilde{\mu} = \mu$.

A direct calculation using the system (5.2) shows that

$$\frac{d}{dt} E_{\tau,\sigma} = u_a^{\text{diss}} \left(\dot{\theta}^a + \tau_\alpha^a \dot{x}^\alpha \right),$$

and therefore that

$$\frac{d}{dt} E_{\tau,\sigma}^\xi = u_a^{\text{diss}} \left(\left[\dot{\theta}^a - \xi^a \right] + \tau_\alpha^a \dot{x}^\alpha \right).$$

This can be rewritten in the following way:

$$\frac{d}{dt} E_{\tau,\sigma}^\xi = g^{ab} u_a^{\text{diss}} \left(\tilde{J}_b - \mu_b - g_{\alpha b} \dot{x}^\alpha \right).$$

We also note that

$$\frac{d}{dt}E_\mu = -g^{ab}u_a^{\text{diss}}g_{\alpha b}\dot{x}^\alpha.$$

Here is a crucial point: as we have seen in the examples, the function $E_{\tau,\sigma}^\xi$ has a maximum in the variable x at the relative equilibrium in question. However, it will typically have a minimum in the variable θ . To create a function with a maximum in the variables $(x^\alpha, \dot{x}^\alpha, \dot{\theta}^a - \xi^a)$ at the equilibrium, we form the following *controlled Liapunov function*:

$$\mathcal{V}_\mu = E_\mu - \frac{1}{2}\lambda g^{ab}(\tilde{J}_a - \mu_a)(\tilde{J}_b - \mu_b) \quad (5.6)$$

where λ is a positive constant.

The Time Derivative of \mathcal{V}_μ . The next step is

7. Compute the time derivative of \mathcal{V}_μ and examine its definiteness.

We will compute the time derivative of \mathcal{V}_μ under the simplifying hypothesis that g^{ab} is independent of x^α . One gets

$$\begin{aligned} \frac{d}{dt}\mathcal{V}_\mu &= -g^{ab}u_a^{\text{diss}}g_{\alpha b}\dot{x}^\alpha - \lambda g^{ab}u_a^{\text{diss}}(\tilde{J}_b - \mu_b) \\ &= -g^{ab}u_a^{\text{diss}}\left(\lambda[\tilde{J}_b - \mu_b] + g_{\alpha b}\dot{x}^\alpha\right) \end{aligned}$$

This leads us to the last step.

8. Define the *dissipative control law*

$$u_a^{\text{diss}} = -c_a^b\left(\lambda[\tilde{J}_b - \mu_b] + g_{\alpha b}\dot{x}^\alpha\right) \quad (5.7)$$

where c_a^b is a positive definite, possibly x^α dependent, control gain matrix.

Note that the dissipative control law depends linearly on $\dot{\theta}^a$ since \tilde{J}_a does.

We are now ready to formulate our main result on asymptotic stabilization. We will make the following assumption that is essentially a condition on the nontriviality of the coupling terms $g_{\alpha a}$ between the control variables θ^a and the internal variables x^α .

AS. *Along no trajectory other than relative equilibria of the original uncontrolled Euler-Lagrange equations for L is $g_{\alpha a}\dot{x}^\alpha$ a constant.*

Theorem 5.2 (Asymptotic Stabilization) *Assume that the hypotheses of the Stabilization Theorem 3.4 as well as the Simplified Matching Assumptions hold. Assume that the relative equilibrium $x_e, \dot{x}_e = 0$ is a maximum of E_μ given by (3.20). In addition, assume condition **AS** and that the dissipative control law is chosen as in (5.7). Then the given relative equilibrium is asymptotically stable modulo the action of the group.*

Proof. We have organized things so that the time derivative of \mathcal{V}_μ is everywhere nonnegative and it vanishes on the set \mathcal{M} defined by

$$u_a^{\text{diss}} = -c_a^b \left(\lambda \left[\tilde{J}_b - \mu_b \right] + g_{\alpha b} \dot{x}^\alpha \right) = 0.$$

The Invariance Principle (see Barbashin and Krasovskii [1952], LaSalle and Lefschetz [1961], and Krasovskii [1963]) shows that all trajectories tend to the subset of \mathcal{M} that is dynamically invariant.

We claim that the dynamically invariant subset of \mathcal{M} consists only of equilibria (note that this set is group invariant). Suppose there is an invariant trajectory in \mathcal{M} . Then the time derivative of the above expression along such a trajectory is

$$-c_a^b \left(\lambda u_b^{\text{diss}} + \frac{d}{dt} (g_{\alpha b} \dot{x}^\alpha) \right) = 0$$

and since we have a trajectory in \mathcal{M} , this implies $g_{\alpha a} \dot{x}^\alpha$ is a constant along these trajectories. Thus, \tilde{J}_a is also constant. Under the simplified matching hypotheses, \tilde{J}_a and J_a differ by terms that are constant along the trajectory, so the conservative control is also zero. (One can check this directly for the pendulum). Thus, the trajectory is a solution of the original Euler-Lagrange equations for L and so by our assumption, this curve must be an equilibrium point. ■

We remark that assumption **AS** can easily be checked in specific examples as is done below. Part II of this paper examines in greater depth the theory behind conditions like **AS** that guarantee that the Invariance Principle holds.

5.2 Example

We illustrate our control law design by using it to asymptotically stabilize the inverted pendulum on a cart of §1.2 and §4.1. The relative equilibrium of interest is $\phi = \dot{\phi} = 0$ and $\dot{s} = \xi$ (where $\xi = \mu/\gamma$ and μ is the desired momentum).

The explicit control law with dissipation is calculated according to (5.3) and (5.7). For the pendulum we have that

$$g_{ab} \tau_\delta^b A^{\delta\alpha} g_{\alpha d} g^{dc} u_c^{\text{diss}} + u_a^{\text{diss}} = \frac{\alpha - \frac{\beta^2}{\gamma} \cos^2 \phi}{\alpha - \frac{\beta^2}{\gamma} (1 + \kappa) \cos^2 \phi} u^{\text{diss}}$$

and from (5.7)

$$\begin{aligned} u^{\text{diss}} &= -c(\lambda(\tilde{J} - \mu) + \beta \cos \phi \dot{\phi}) \\ &= -c(\lambda(\beta \cos \phi \dot{\phi} + \gamma \dot{s} + \kappa \beta \cos \phi \dot{\phi} - \mu) + \beta \cos \phi \dot{\phi}) \\ &= -c((\lambda(\kappa + 1) + 1)\beta \cos \phi \dot{\phi} + \lambda\gamma(\dot{s} - \xi)) \end{aligned}$$

where $\lambda > 0$ and $c > 0$ and $\mu = \gamma\xi$. Substitution into (5.3) gives

$$u = \frac{\kappa\beta \sin \phi (\alpha \dot{\phi}^2 + \cos \phi D) - c \left(\alpha - \frac{\beta^2}{\gamma} \cos^2 \phi \right) \left((\lambda(\kappa + 1) + 1)\beta \cos \phi \dot{\phi} + \lambda\gamma(\dot{s} - \xi) \right)}{\alpha - \frac{\beta^2}{\gamma} (1 + \kappa) \cos^2 \phi}. \quad (5.8)$$

We have already shown in §4.1 that the hypotheses of Theorem 3.4 hold with the Simplified Matching Assumptions, and the relative equilibrium is a maximum of E_μ . Condition **AS** holds since along no trajectories other than relative equilibria of the uncontrolled system is $d/dt(\beta \cos \phi \dot{\phi}) = u^{\text{cons}} = 0$. Thus, by Theorem 5.2 the control u defined by (5.8) makes the equilibrium of interest asymptotically stable.

Simulation. We demonstrate the control law with a MATLAB simulation of the pendulum-cart system where $m = 0.14$ kg, $M = 0.44$ kg and $l = 0.215$ m. We let the desired cart velocity be $\xi = 0$ m/s and choose control gains to be $\kappa = 135(M/m)$, $\lambda = 0.01$ and $c = 50$. Figure 5.1 shows plots of pendulum angle and velocity and cart position and velocity for the system subject to our stabilizing controller with dissipation added. The pendulum starts from a nearly horizontal position ($\phi(0) = \pi/2 - 0.2$ rad), showing the large basin of attraction for the upright pendulum. We have even given the pendulum an initial positive (downward) velocity of $\dot{\phi}(0) = 0.1$ rad/s. The cart's initial position is $s(0) = 0$ m and initial velocity is $\dot{s}(0) = -3$ m/s. Note that the cart comes to rest as desired, but due to the large initial acceleration needed to bring the pendulum to vertical, the cart drifts far from its initial position. In Part II, we present the methodology for adding another term (that breaks symmetry) to the control law in order to drive the cart position as desired. We also address more general tracking problems.

At the bottom of Figure 5.1 we have included a plot of the control law u and the Liapunov function V_μ as functions of time. The control law has an initial peak to provide the initial large acceleration. The Liapunov function can be seen to be initially negative and to strictly increase until it reaches zero at the equilibrium.

Acknowledgments. We thank John Baillieul, Francesco Bullo, Joel Burdick, Neil Getz, Dan Koditschek, P.S. Krishnaprasad, Richard Murray, Tudor Ratiu, Andy Ruina, Gloria Sánchez de Alvarez and Craig Woolsey for helpful comments. We would also like to thank the referees for their suggestions. AMB would like to acknowledge partial research support by the National Science Foundation grants DMS-9496221 and DMS-9803181, AFOSR grant F49620-96-1-0100, a Guggenheim Fellowship and the Institute for Advanced Study, NEL acknowledges partial support from the National Science Foundation under grant BES-9502477 and by the Office of Naval Research under grants N00014-96-1-0052 and N00014-98-1-0649 and JEM acknowledges partial research support by AFOSR Grant F49620-95-1-0419.

References.

- Åström, K.J. and K. Furuta [1996], Swinging up a pendulum by energy control. *IFAC, San Francisco* **13**.
- Auckly, D., L. Kapitanski and W. White [2000], Control of nonlinear underactuated systems, *Comm. Pure Appl.Math.*, **53**, 354–369.
- Baillieul, J. [1993], Stable average motions of mechanical systems subject to periodic forcing. *Fields Inst. Comm.* **1**, 1–23.

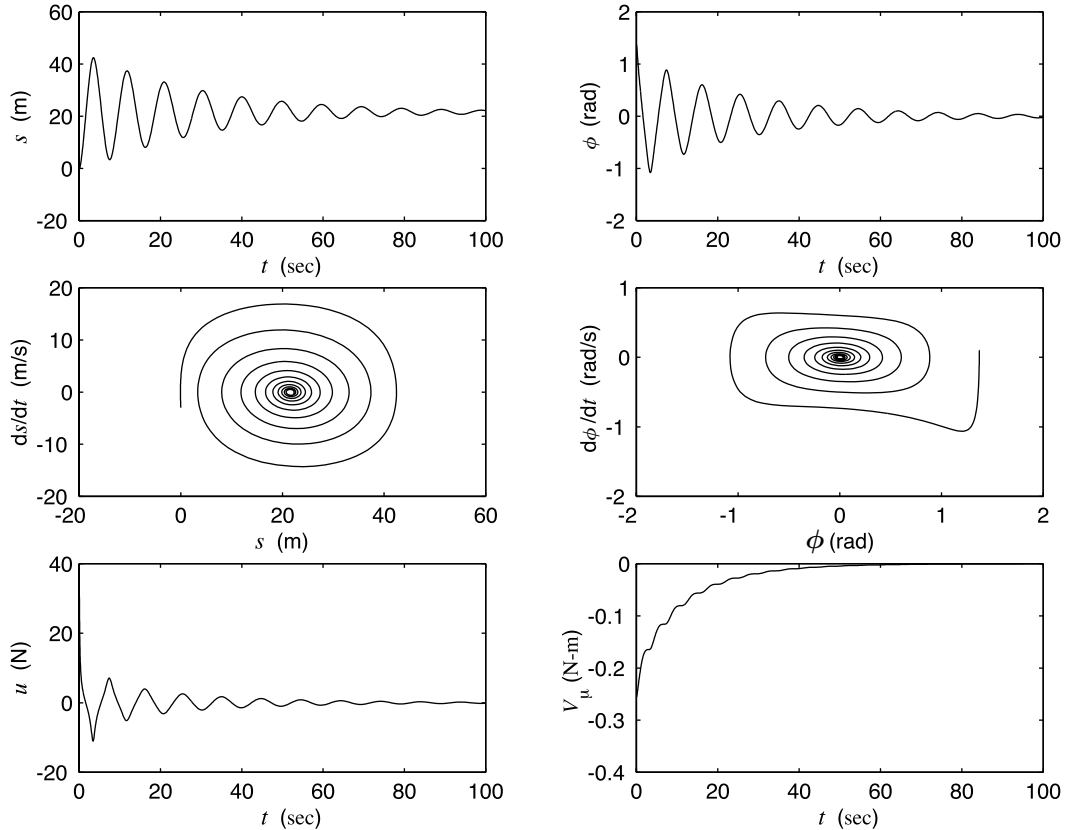


Figure 5.1: Asymptotic stabilization of a pendulum starting from a nearly horizontal position.

Barbashin, E.A and N.N Krasovskii [1952], Stability of motion in the large. *Doklady Mathematics*, (Translations of Proceedings of Russian Academy of Sciences), **86**, 3, 453–456.

Bloch, A.M., D.E. Chang, N.E. Leonard and J.E. Marsden [2000], Controlled Lagrangians and the stabilization of mechanical systems II; Potential shaping and tracking *IEEE Trans. on Automatic Control* (to appear).

Bloch, A.M., P.S. Krishnaprasad, J.E. Marsden and G. Sánchez de Alvarez [1992], Stabilization of rigid body dynamics by internal and external torques. *Automatica* **28**, 745–756.

Bloch, A.M., N.E. Leonard and J.E. Marsden [1997], Stabilization of mechanical systems using controlled Lagrangians, *Proc. 36th IEEE Conf. Decision and Control*, San Diego, CA, 2356–2361.

Bloch, A.M., N.E. Leonard and J.E. Marsden [1998], Matching and stabilization by the method of controlled Lagrangians, *Proc. 37th IEEE Conf. Decision and Control*, Tampa, FL, 1446–1451.

Bloch, A.M., N.E. Leonard and J.E. Marsden [1999a], Stabilization of the pendulum on a

- rotor arm by the method of controlled Lagrangians, *Proc. IEEE Int. Conf. Robotics and Automation*, Detroit, MI, 500–505.
- Bloch, A.M., N.E. Leonard and J.E. Marsden [1999b] Potential shaping and the method of controlled Lagrangians *Proc. 38th IEEE Conf. Decision and Control*, Phoenix, AZ, 1653–1657.
- Bloch, A.M., N.E. Leonard and J.E. Marsden [2000], Controlled Lagrangians and the stabilization of Euler-Poincaré mechanical systems, *Int. J. of Robust and Nonlinear Control* (to appear).
- Bloch, A. M., J. E. Marsden and G. Sánchez De Alvarez [1997], Stabilization of relative equilibria of mechanical systems with symmetry, in *Current and Future Directions in Applied Mathematics*, (M. Alber and B. Hu and J. Rosenthal, eds.), Birkhäuser., 43–64.
- Brockett, R.W. [1976], Control theory and analytical mechanics, in *1976 Ames Research Center (NASA) Conference on Geometric Control Theory*, R. Hermann and C. Martin, eds., Lie Groups: History Frontiers and Applications, Vol. 7, Math. Sci. Press, Brookline, Mass., USA.
- Crouch, P. and A.J. van der Schaft [1987], *Variational and Hamiltonian Control Systems*, Lecture Notes in Control and Informations Sciences **10**, Springer Verlag.
- Fradkov, A.L. [1996], Swinging control of nonlinear oscillations. *International Journal of Control* **64**, 1189–1202.
- Getz, N.H. and J.E. Marsden [1995], Control for an autonomous bicycle, *Proc. IEEE Int. Conf. Robotics and Automation*, Nagoya, Japan.
- Hamberg, J. [1999] General matching conditions in the theory of controlled Lagrangians, *Proc. 38th IEEE Conf. Decision and Control*, Phoenix, AZ., 2519–2523.
- Jalnapurkar, S.M. and J.E. Marsden [1999], Stabilization of relative equilibria II, *Reg. and Chaotic Dynamics*, **3**, 161–179.
- Jalnapurkar, S.M. and J.E. Marsden [2000], Stabilization of relative equilibria, *IEEE Trans. Automat. Control*, **45**, 1483–1491.
- Krasovskii N.N. [1963] *Stability of Motion*, Stanford University Press, (originally published 1959).
- Koditschek, D.E. [1989], The application of total energy as a Lyapunov function for mechanical control systems, in *Dynamics and Control of Multibody Systems* (Brunswick, ME, 1988), 131–157, *Contemp. Math.*, **97**, Amer. Math. Soc., Providence, RI.
- Koditschek, D.E. and E. Rimon [1990], Robot navigation functions on manifolds with boundary. *Adv. in Appl. Math.* **11**, 412–442.
- Koon, W.S. and J.E. Marsden [1998] The Poisson reduction of nonholonomic mechanical systems, *Reports on Math Phys.* **42**, 101–134.
- Krasovskii N.N. [1963] *Stability of Motion*, Stanford University Press, (originally published 1959).
- Krishnaprasad, P.S. [1985], Lie-Poisson structures, dual-spin spacecraft and asymptotic stability, *Nonl. Anal. Th. Meth. and Appl.* **9**, 1011–1035.
- LaSalle, J.P. and S. Lefschetz [1961] *Stability by Liapunov's Direct Method, with Applications*, New York, Academic Press.

- Lewis, D.R. [1992], Lagrangian block diagonalization, *Dyn. Diff. Eqns.* **4**, 1–42.
bottom-heavy
- Leonard, N.E. [1997], Stabilization of underwater vehicle dynamics with symmetry-breaking potentials, *Systems and Control Letters* **32**, 35–42.
- Leonard, N.E. and J.E. Marsden [1997], Stability and drift of underwater vehicle dynamics: Mechanical systems with rigid motion symmetry, *Physica D* **105**, 130–162.
- Lewis, A.D. and R. Murray [1997], Configuration controllability of simple mechanical control systems, *SIAM Journal on Control and Optimization* **35**, 766–790.
- Marsden, J.E. [1992], *Lectures on Mechanics*. London Mathematical Society Lecture Note Series, **174**, Cambridge University Press.
- Marsden, J.E. and T.S. Ratiu [1994], *Symmetry and Mechanics*. Texts in Applied Mathematics, **17**, Springer-Verlag, Second Edition, 1999.
- Marsden, J.E. and J. Scheurle [1993a], Lagrangian reduction and the double spherical pendulum, *ZAMP* **44**, 17–43.
- Marsden, J.E. and J. Scheurle [1993b], The reduced Euler-Lagrange equations, *Fields Institute Comm.* **1**, 139–164.
- Ortega, R. A. Loria, R. Kelly, and L. Praly [1995], On passivity-based output feedback global stabilization of Euler-Lagrange systems, *Int. J. Robust and Nonlinear Control*, special issue on Control of Mechanical Systems, **5**, no. 4, 313–325.
- Simo, J.C., D.R. Lewis and J.E. Marsden [1991], Stability of relative equilibria I: The reduced energy momentum method, *Arch. Rat. Mech. Anal.* **115**, 15–59.
- Van der Schaft, A.J. [1982], Hamiltonian dynamics with external forces and observations, *Mathematical Systems Theory* **15**, 145–168.
- Van der Schaft, A. J. [1986], Stabilization of Hamiltonian systems, *Nonlinear Analysis, Theory, Methods and Applications*, **10**, 1021–1035.
- Wang, L.S. and P.S. Krishnaprasad [1992], Gyroscopic control and stabilization, *J. Nonlinear Sci.* **2**, 367–415.
- Zenkov, D.V., A.M. Bloch, and J.E. Marsden [1998], The energy momentum method for the stability of nonholonomic systems *Dyn. Stab. of Systems.*, **13**, 123–166.